

La migración y los derechos de la niñez y adolescencia

Inter-American Dialogue

Febrero 2025



Después de la recesión global de 2009 se precipita una ola migratoria como consecuencia de la fracturación del Estado y dificultad de proteger a sus ciudadanos.

Escala-

1. Los migrantes de ALC aumentaron de 33 millones en 2015 a al menos 46 millones en 2024, seis millones entre 2020-2024.
2. Nueve países captan la mayoría de esta migración, entre ellos Chile, Colombia, Costa Rica, Estados Unidos, Panamá, Perú y la República Dominicana entre otros.

Composición-

3. La composición de la migración también ha cambiado. Demográficamente, las personas en movimiento son la mitad adultos, casi la mitad familias y niños no acompañados: el 5% de todos los inmigrantes que ingresarán a EE. UU. en 2022 son menores no acompañados;
- Mas del 10% de la migración hoy día está compuesta de menores de edad, y mas del 20% de los migrantes en movimiento son menores;
- Cada año abandonan más niños que el incremento anual de matriculación en la escuela secundaria en Centroamérica: la matriculación en Guatemala está disminuyendo desde 2018

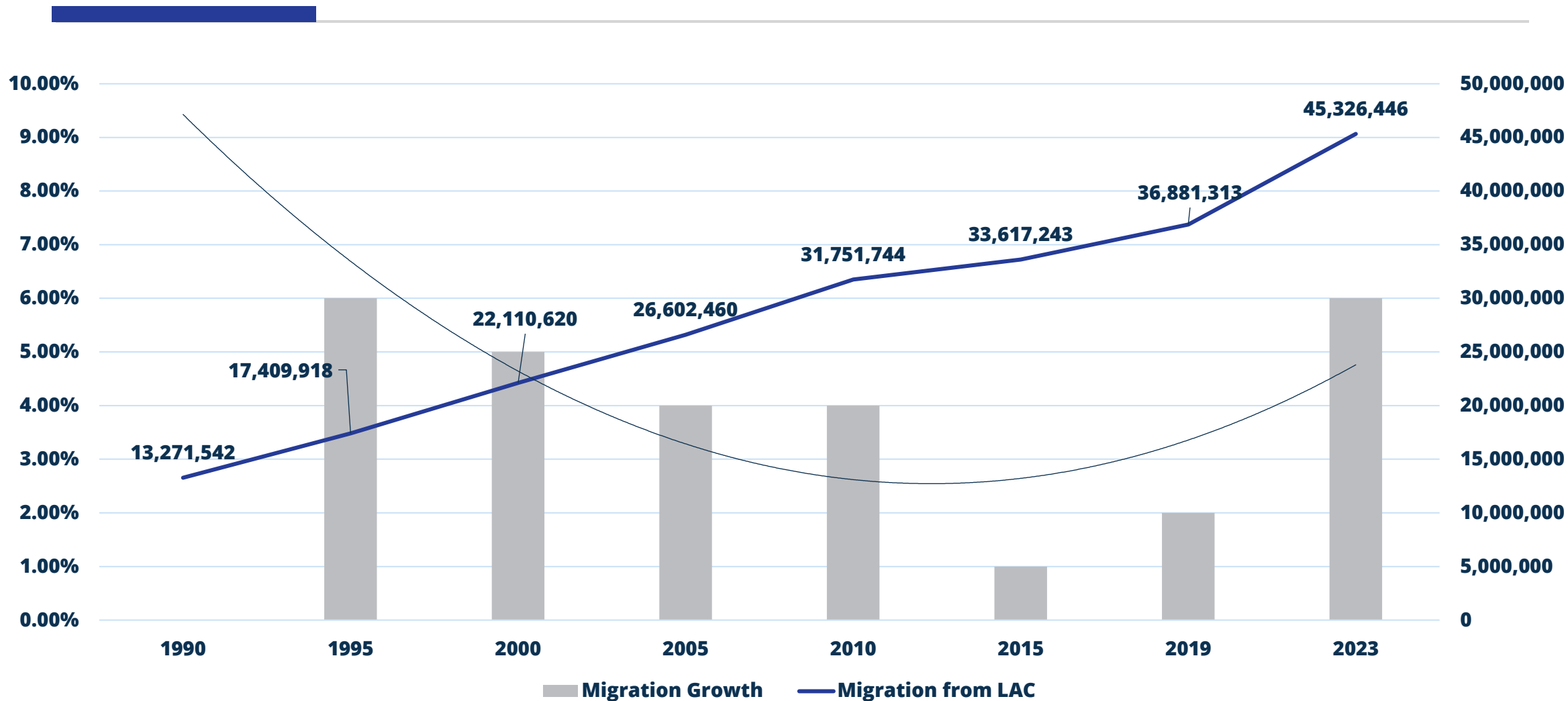
La naturaleza

- Los factores que explican la migración actual son más complejos e incluyen crisis políticas, inseguridad económica, violencia, sistemas de protección social débiles, y desastres naturales.
- Las nacionalidades con mayores flujos migratorios son las provenientes de países políticamente más inestables o represivos, como Cuba, Honduras, Nicaragua y Venezuela.
- El impacto económico de estos flujos representa ahora el 5% del ingreso nacional de América Latina y el Caribe.

Un problema de política exterior

4. Es probable que la migración futura continúe, pero a un ritmo más lento, y su continuidad exige soluciones concretas de política exterior en el futuro.
- Estos flujos señalan que la fragilidad del Estado es el denominador común en todos los casos de migración.
- Por lo tanto, es más necesaria una solución de política exterior para mitigar la futura migración debido a la inestabilidad política.

1. Después del 2009 ocurre un fuerte crecimiento migratorio y que se acentúa diez años después



2. Grandes cambios migratorios ocurren especialmente desde 2019 frente a la fracturación de los estados en al menos 8 países

- En cinco años, la migración latinoamericana creció a un ritmo anual del 4,2% (casi seis veces más que el crecimiento demográfico regional anual en ese período 0.6%)
- Nueve países están acogiendo a casi el 80% de todos los migrantes;
- Ocho nacionalidades representaban casi la mitad de todos los inmigrantes;
- Casi la mitad de la migración se produjo dentro de la región;
- La migración venezolana no sólo se duplicó, sino que representa casi una cuarta parte de toda la migración latinoamericana

	2019(%)		2023(%)	
Migración Latinoamericana y Caribeña	39,026,446		45,926,033	4.2%
Migrantes en nueve países	27,315,272	70%	35,179,497	77%
Migrantes de ocho nacionalidades	12,048,721	31%	21,541,711	47%
Migración intra regional	15,663,793	40%	21,063,380	46%
Venezolanos	8%		17%	
Venezolanos en los 9 países	25%		22%	

Destino y Origen migratorio, 2023

Inmigración a	2023
Brasil	1,286,428
Chile	1,482,390
Costa Rica	575,675
Colombia	3,419,591
Dom. Rep.	508,000
Ecuador	800,000
Panamá	350,000
Perú	1,894,759
Estados Unidos	24,162,654
Nueve países	34,479,497
Migración total	46 millones

Migrantes de	En nueve países	En el mundo
Colombia	1,668,777	2,670,043
Cuba	1,310,064	1,572,077
El Salvador	1,562,194	1,640,304
Guatemala	2,236,861	2,281,598
Haití	1,618,629	1,942,355
Honduras	1,326,052	1,379,094
Nicaragua	1,262,308	1,956,577
Venezuela	7,713,964	8,099,663
Ocho países	18,834,399	21,541,711

La migración a Chile, Costa Rica, Panamá y R.D. también ha aumentado en grandes cifras (2023). Siete países Latinoamericanos capturan 20% de todos los migrantes de ALC. Chile acoge ahora a 1,4 millones de inmigrantes.

Migrantes en... Migrantes de...	Brazil	Chile	Costa Rica	Colombia	Dom. Rep	Ecuador	Panamá	Peru	Estados Unidos	Nueve países	Part.	M/ Pop
Colombia	81036	173,440	26,739		3,687	200,539	98,253	57030	1,028,053	1,668,777	47%	5%
Cuba	35602	3,173	5,791	1,945	3,927	3,083	2,917	2,589	1,251,037	1,310,064	83%	14%
El Salvador	279	242	13,984	409	273	537	3,330		1,543,140	1,562,194	94%	24%
Guatemala	357	236	2,676	490	438	442	1,658		2,230,564	2,236,861	89%	7%
Haiti	169489	180,852		122	336,729	98	559		930,780	1,618,629	87%	12%
Honduras	155	249	3,947	376	433	482	1,553		1,318,857	1,326,052	85%	7%
Nicaragua	449	249	440,298	611	298	403	40,000		780,000	1,262,308	93%	17%
Venezuela	626,885	532,715	29,906	2845706	125,549	444,778	57,979	1,662,889	1,387,557	7,713,964	88%	26%
Ocho países	914,252	891,156	523,341	2,849,659	461,068	707,798	294,628	1,722,508	10,469,989	18,834,399	82%	12%
ALC	1,286,428	1,482,390	575,675	3,419,591	508,000	800,000	350,000	1,894,759	24,862,654	35,179,497	73%	
	75%	54%	92%	99%	98%	98%	98%	98%	98%			

Fuente: UNDESA, oficinas de migración de cada país. Un decimo país huésped es México, que formalmente dice tener 1.6 millones y un millón albergados en tránsito. Otros dos países de Fuerte migración incluyen a Bolivia y Ecuador.

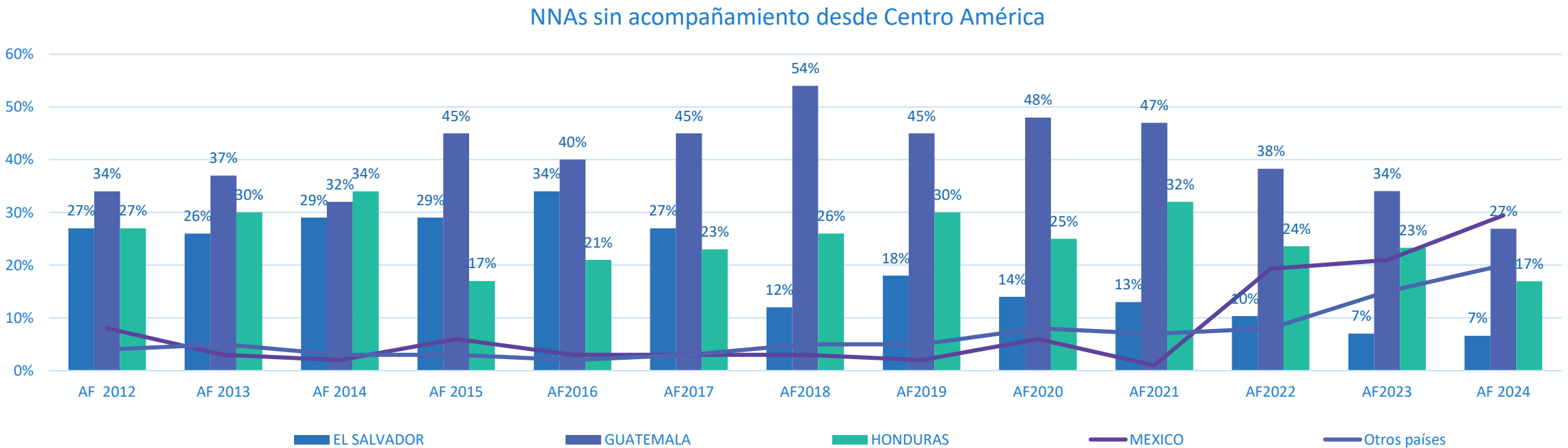
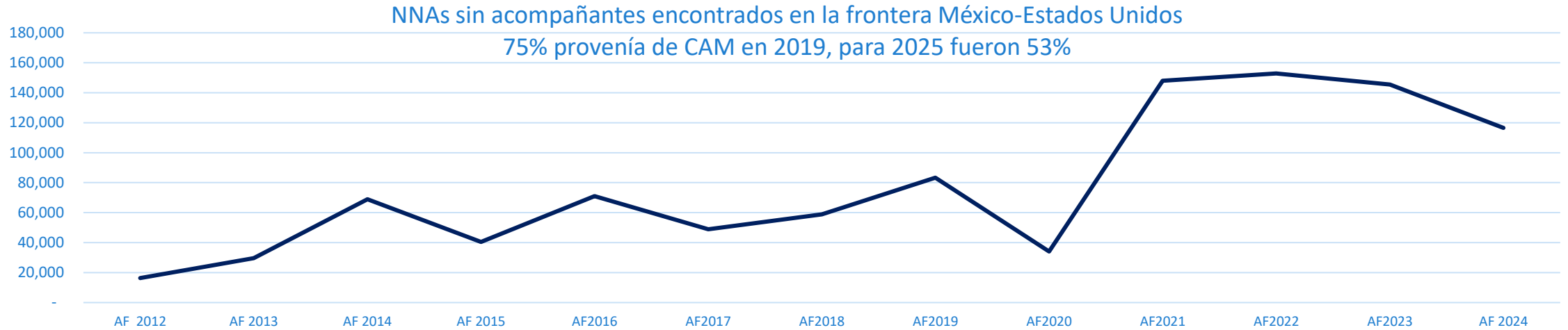
3. Los niños, niñas y adolescentes se ubican entre esta población emigrante en la región

Niños migrantes	2019	(%)	2023	(%)
Menores de edad	3,122,115	8%	4,592,603	10%
Centroamericanos			653,182	9%
Venezolanos			1,457,939	17%
Haitianos			155,388	8%

Niños migrantes en (%)	En tránsito	Menores
Brasil	12%	154,371
Chile	13%	192,711
Costa Rica	18%	103,622
Colombia	22%	762,569
Dom. Rep.	17%	86,360
Ecuador	18%	144,000
Panamá	13%	45,479
Perú	25%	473,690
Estados Unidos	7%	1,740,386
Nueve países	11%	3,703,187

Source: UNICEF, US Census, LAC Government statistics

Las primeras señales de esta migración ocurre después de la recesión global con la salida solos de niños, niñas y adolescentes (NNA) desde Centro América



El gobierno mexicano dice que devuelve al menos 20.000 niños y recibe de Estados Unidos al menos 5.000 niños mexicanos anualmente

4. Por la prevención de migrar y la protección y promoción de derechos de la niñez y adolescencia

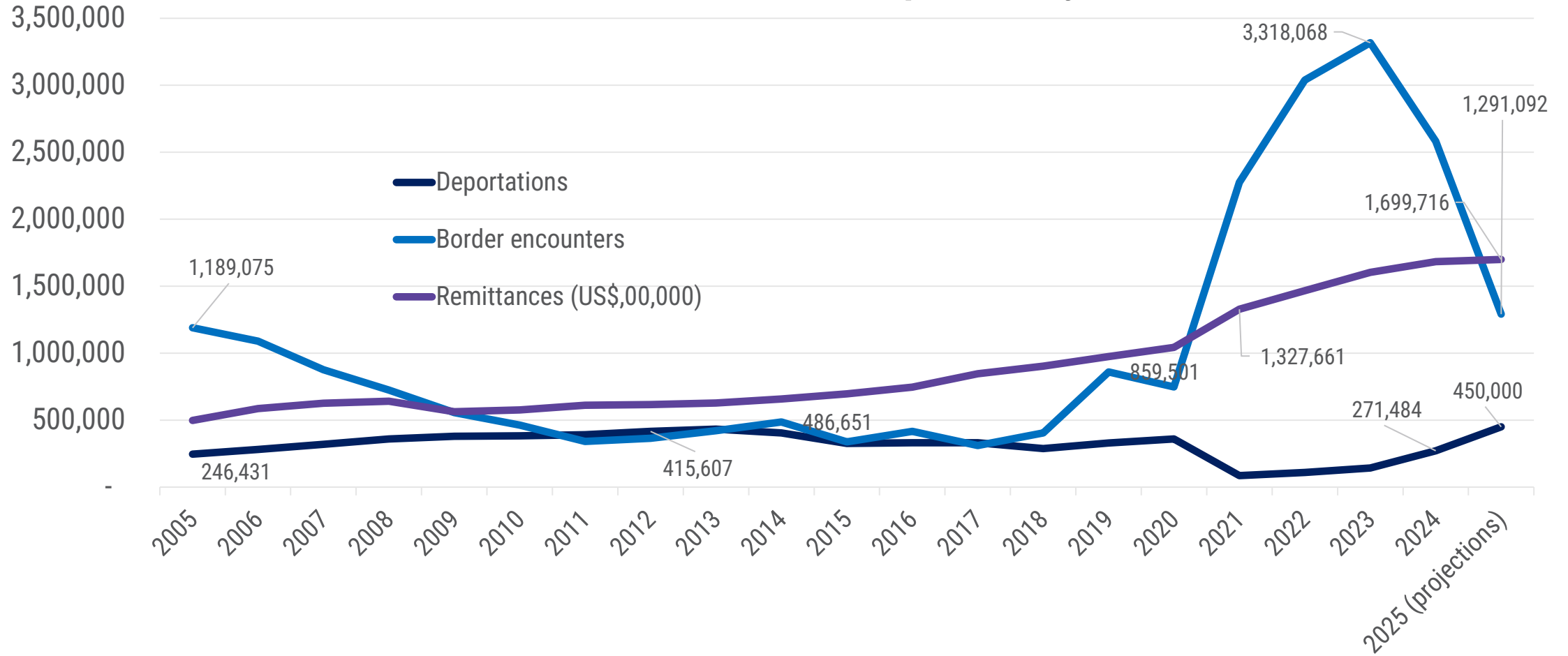
- Las realidades económico-política y aspiracionales han causado que familias y niños, niñas y adolescentes salgan de sus países;
- El problema es sistémico y regional, que requiere de herramientas internacionales y de política exterior para estabilizar estos países y reducir la migración, especialmente del capital humano en formación;
- Mientras tanto es importante preservar la integridad y garantizar un mejor futuro para que la niñez y adolescencia prospere y haga de la región una zona rica en conocimiento, riqueza material y oportunidades.
- Los siete componentes de la declaración de los derechos de la niñez y adolescencia son un esfuerzo importante en esa dirección.

Declaración de Derechos...

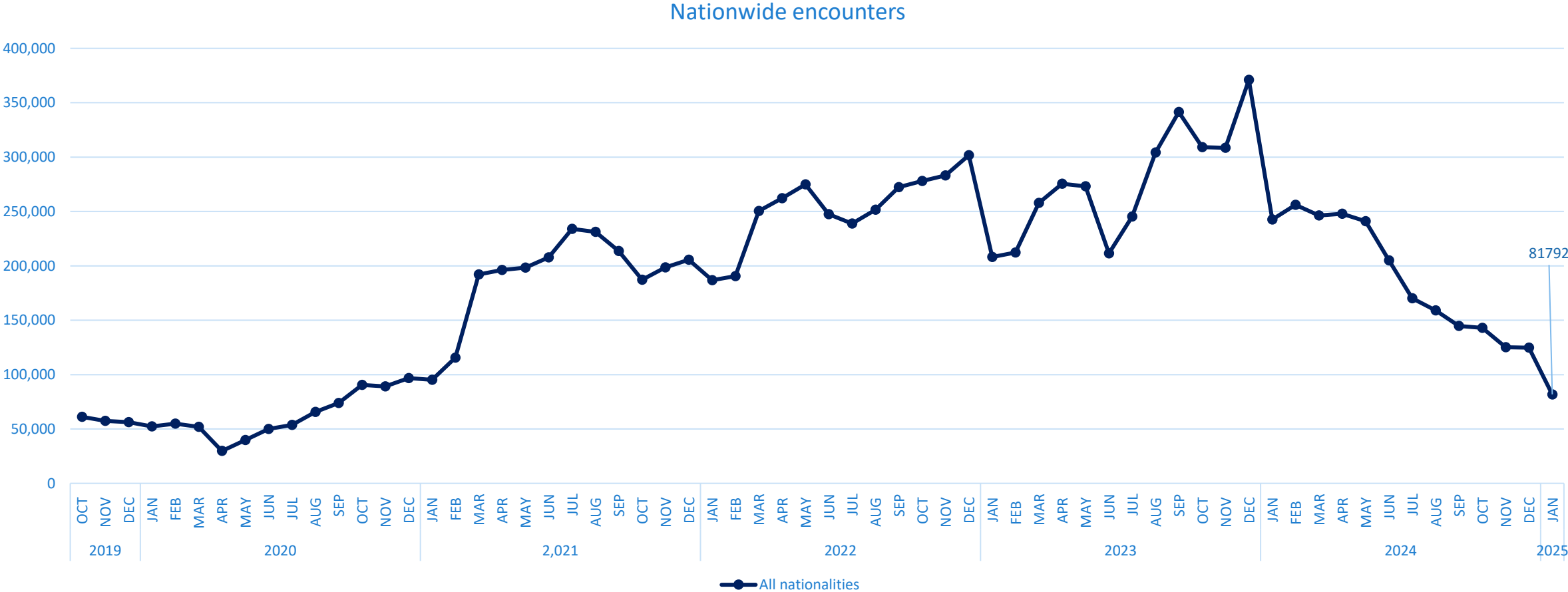
1. Acceso a la asistencia y protección social
2. Acceso a la educación
3. Acceso a la salud física y mental
4. Capacitación y concientización de funcionarios Flexibilización de procesos migratorios por vías regulares Medidas contra la trata y/o tráfico ilícito
5. Protección a la niñez no acompañada y facilitación de la reunificación familiar
6. Recopilación y uso de información
7. Soluciones a la falta de documentación

Movilidad y Dinero: un proceso de desaceleración

Encuentros en la frontera MX-EU, deportación y remesas



Migration arrivals to the United States border



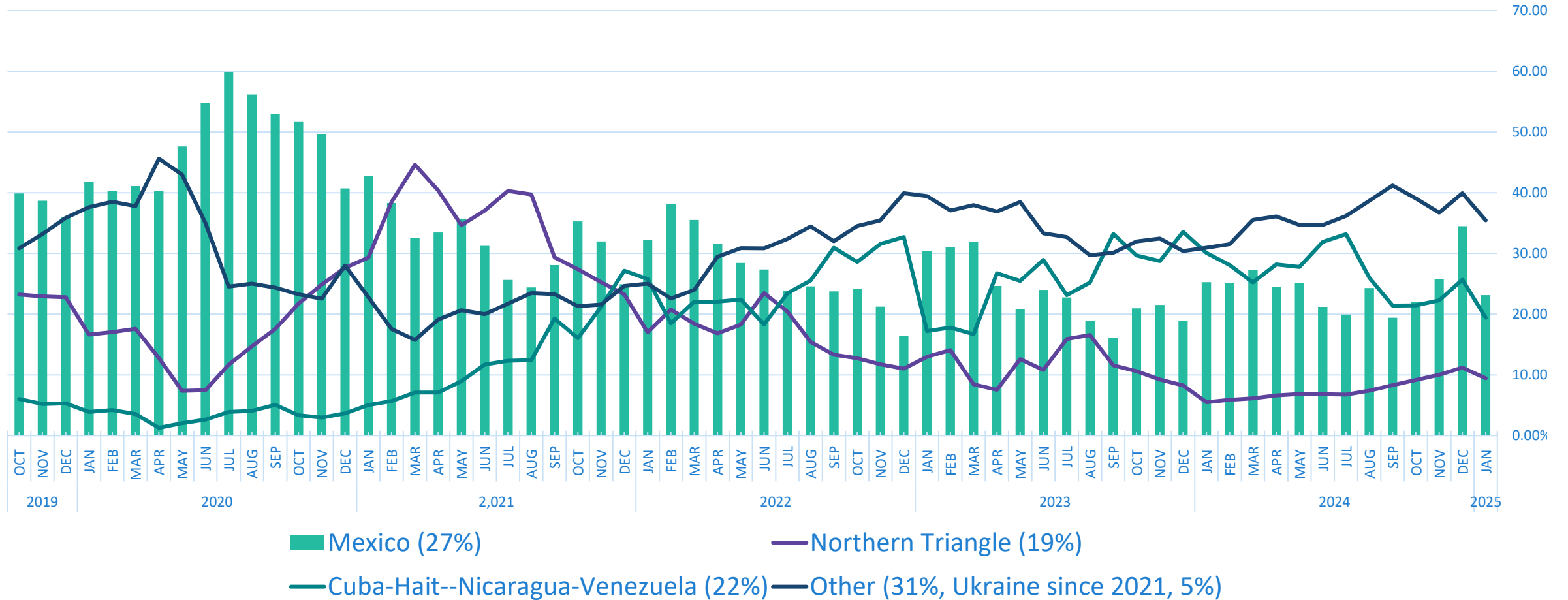
Source: DHS nationwide encounters



www.thedialogue.com | 202-822-9002

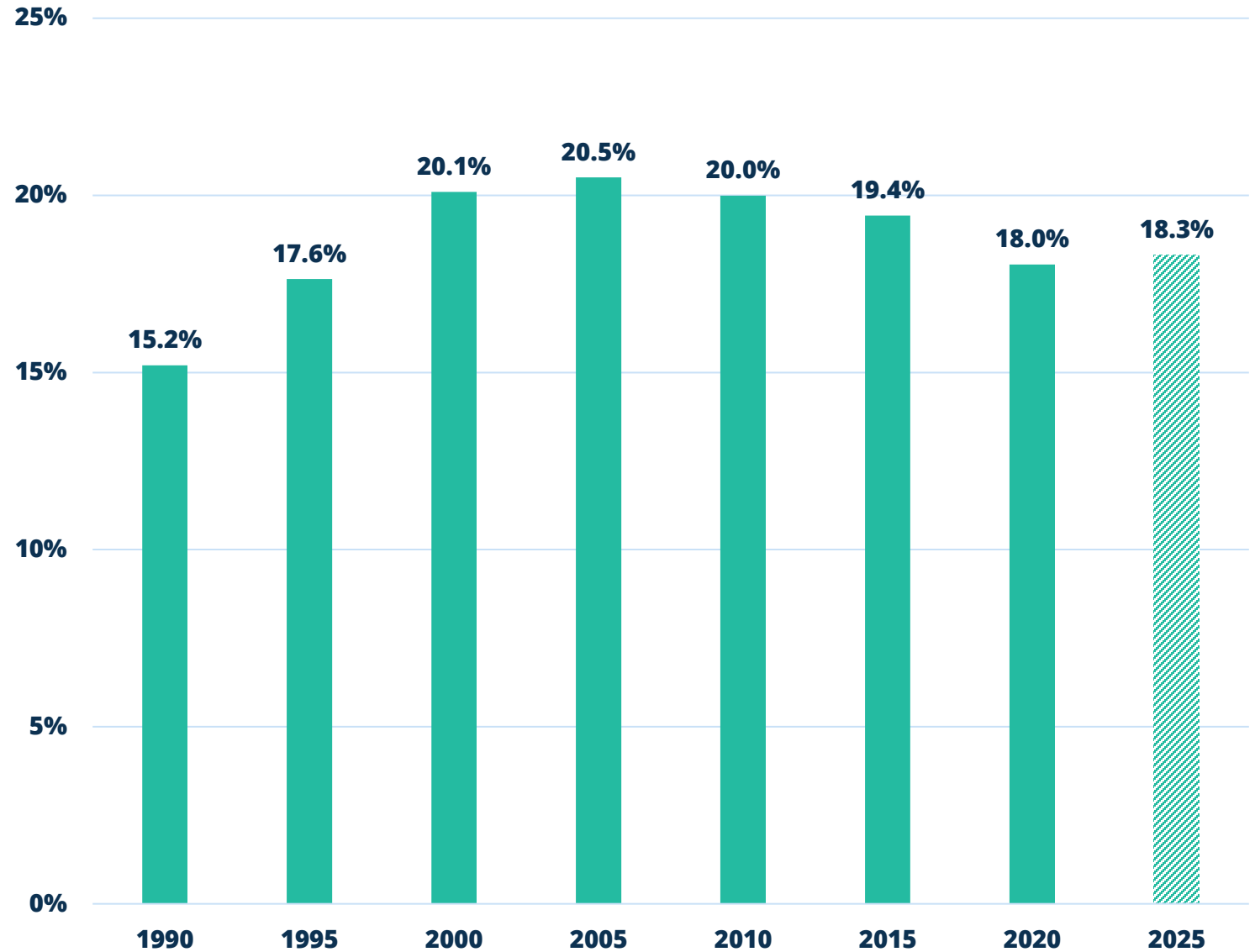
Changing composition of migration: the increase is from Fragile States

Migration to the US-Mexico Border



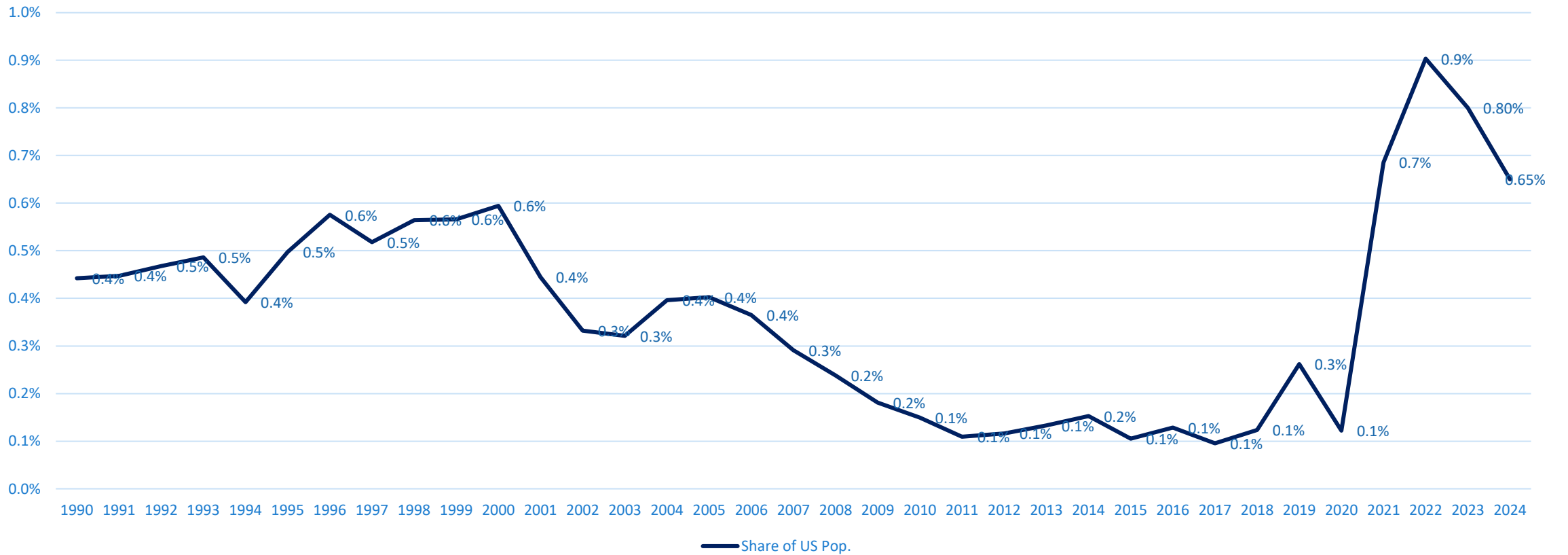
Despite the large inflow of migration, the US continues to be close to 20% of the world's destination of migrants

Source: UNDESA



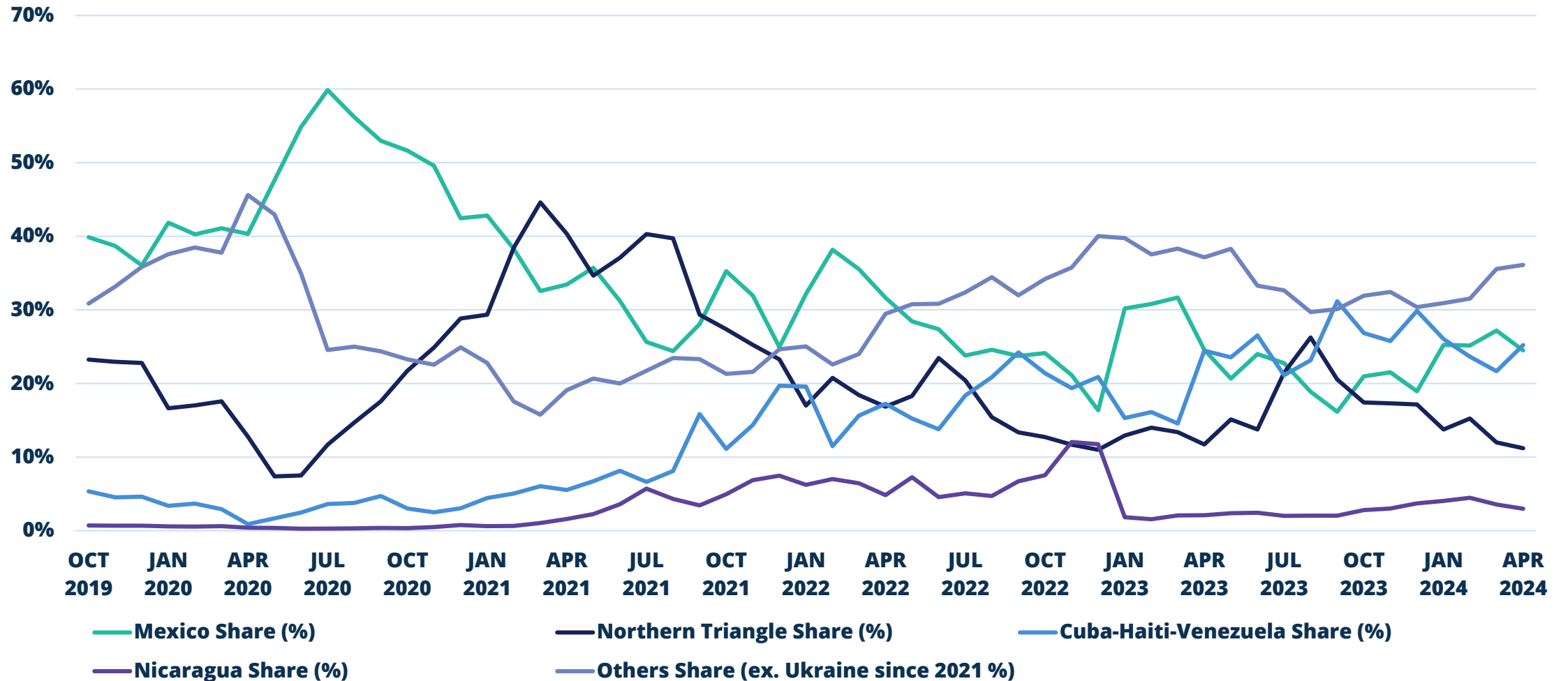
A shifting trend in migration?

Apprehensions as Share of the US Population



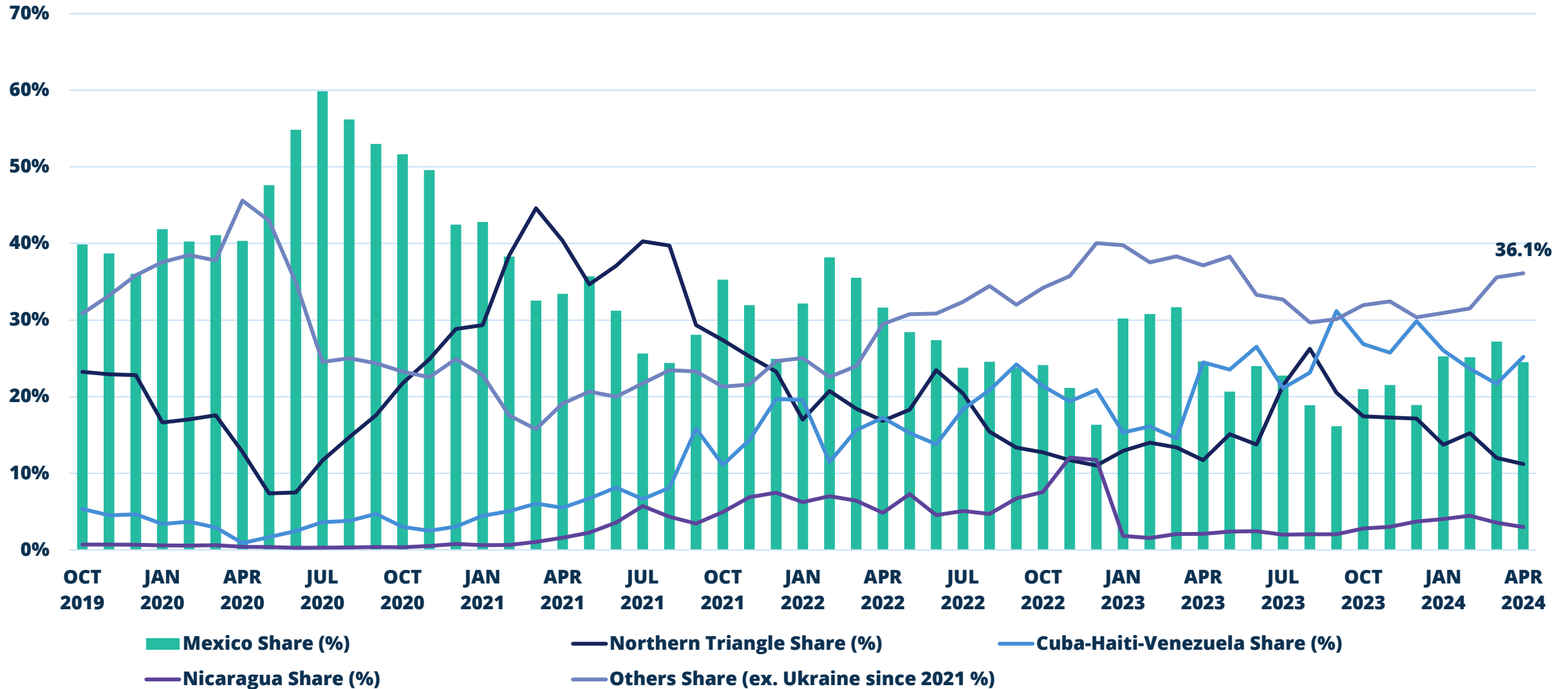
Changing composition of migration: the increase relative to all countries comes from Fragile States

Migration to the US-Mexico Border



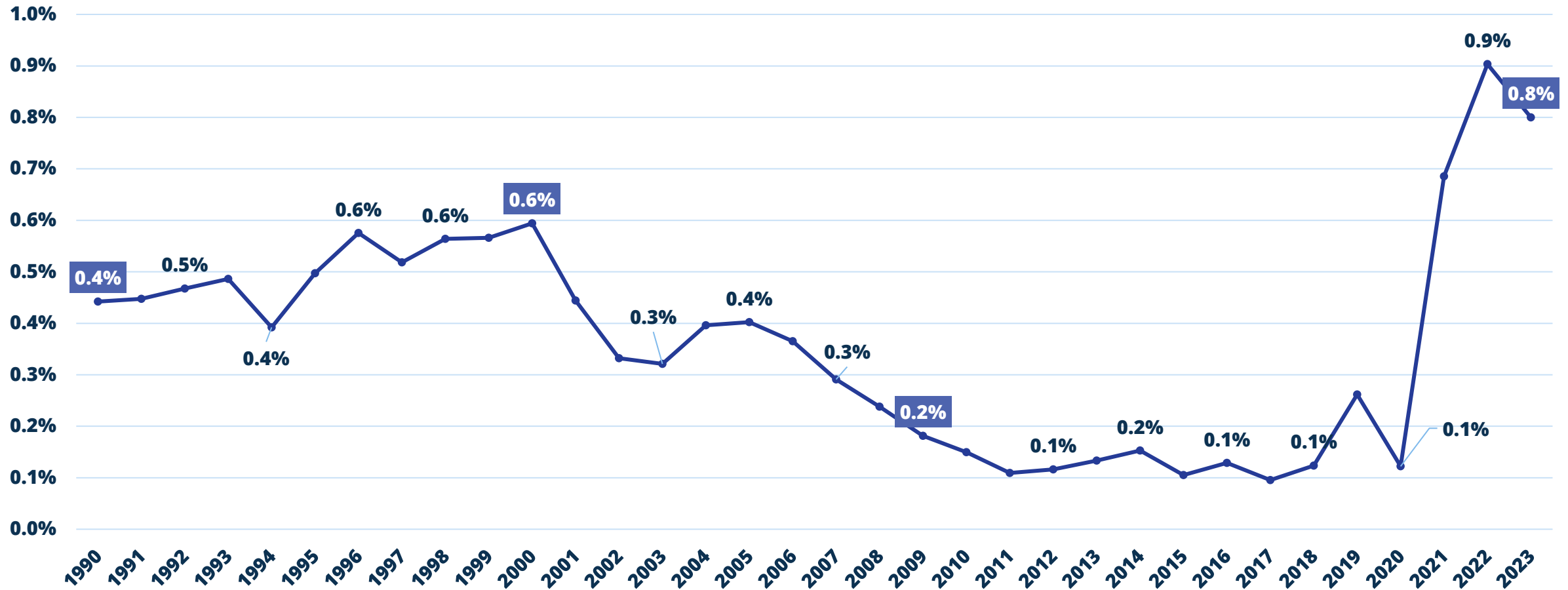
Apprehensions of *Other Than Mexicans* on the rise

Migration to the US-Mexico Border



Is there a shifting trend in migration?

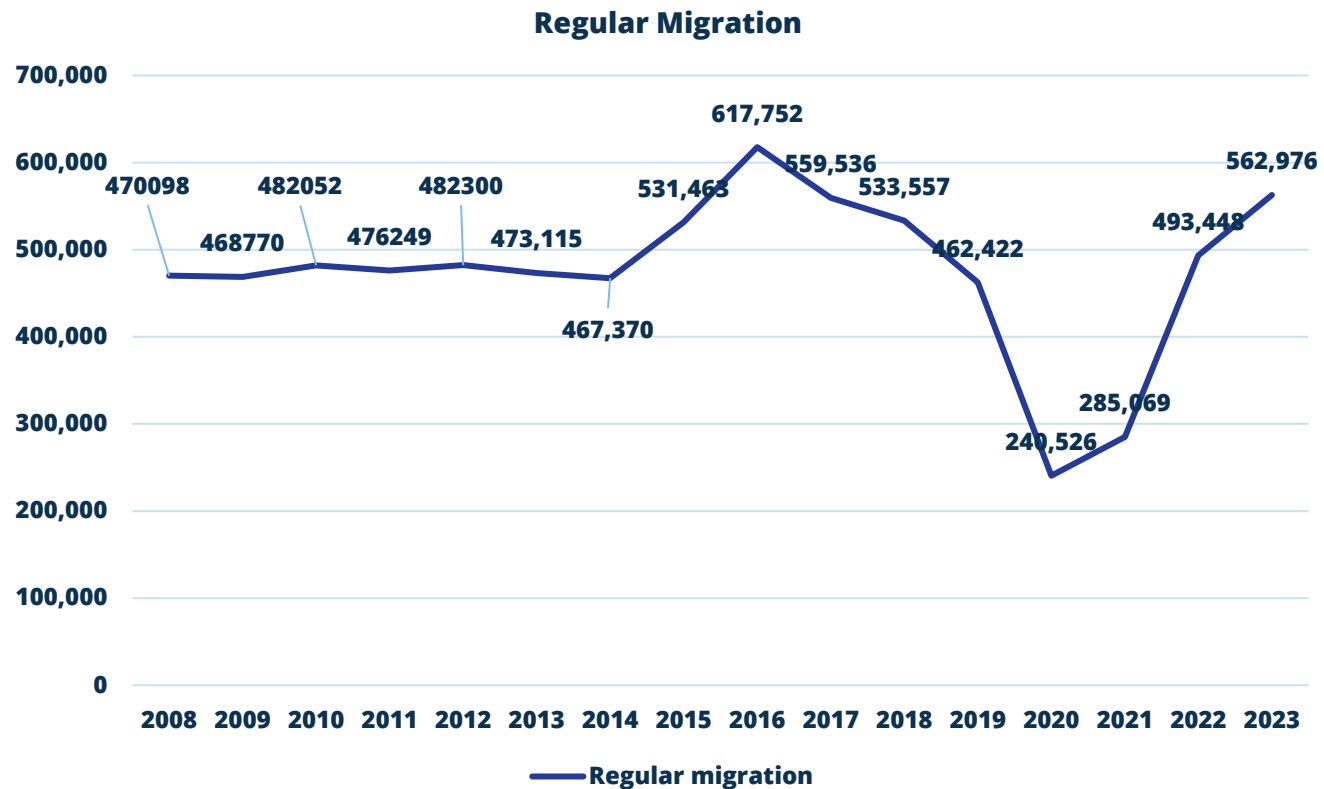
Border Encounters as Share of the US Population



Recent migration growth is originating from fragile states

Countries	2020	Growth (2015-2020)
Venezuela, RB	5,415,337	51%
Guatemala	1,577,375	7%
Nicaragua	850,000	7%
Honduras	985,077	6%
Haiti	1,869,671	5%
Cuba	1,897,128	4%
LAC	41,395,895	4%
Brazil	1,850,000	4%
D. Republic	1,724,189	3%
Argentina	1,076,148	3%
Bolivia	927,244	2%
Colombia	3,024,273	2%
Peru	1,519,635	2%
Jamaica	1,118,931	2%
Costa Rica	150,241	1%
Trinidad and Tobago	330,519	1%
Paraguay	896,484	1%
El Salvador	1,599,058	1%
Mexico	12,185,737	0%
Ecuador	1,127,891	0%
Panama	139,520	-1%
Guyana	438,413	-2%
Belize	52,756	-4%
Suriname	273,209	-8%
Uruguay	367,060	-9%

Regular immigration: on the upswing?



Immigrant Categories	2023	Percent
Immediate relatives	218,185	44%
Family sponsored residence	156,800	32%
Employment based preference	55,058	11%
Diversity migrants	54,334	11%
Other	9,071	2%

Region	2023	Percent
Africa	54,711	11%
Asia	178,958	36%
Europe	47,422	10%
Mexico, Central America and the Caribbean	176,747	36%
Oceania	2,034	0%
South America	33,576	7%
Worldwide	562,976	

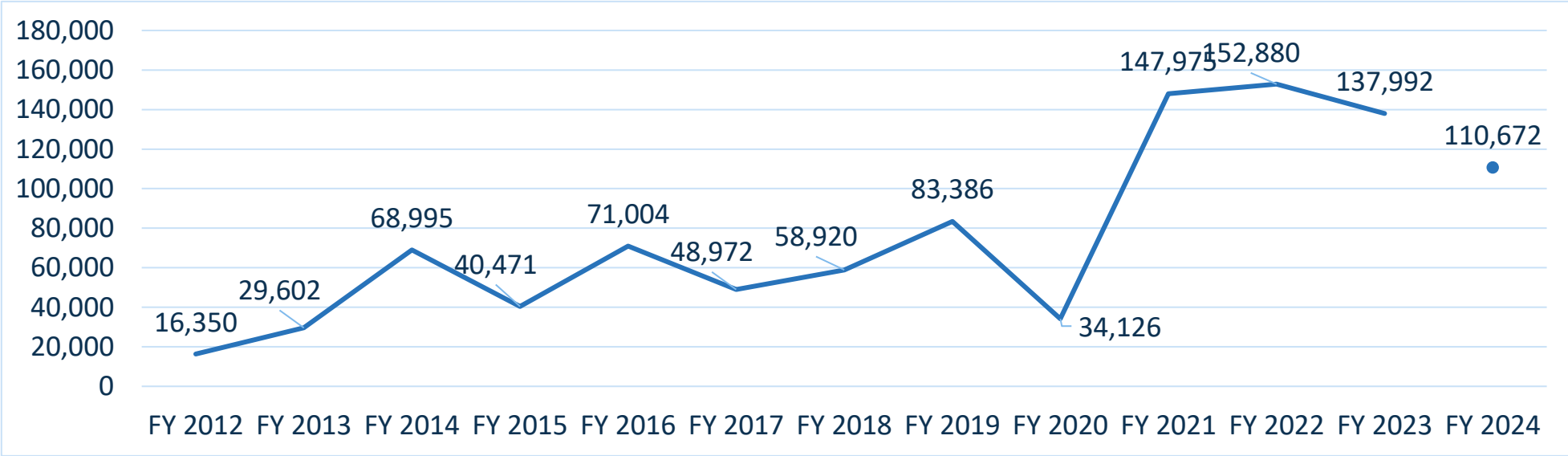
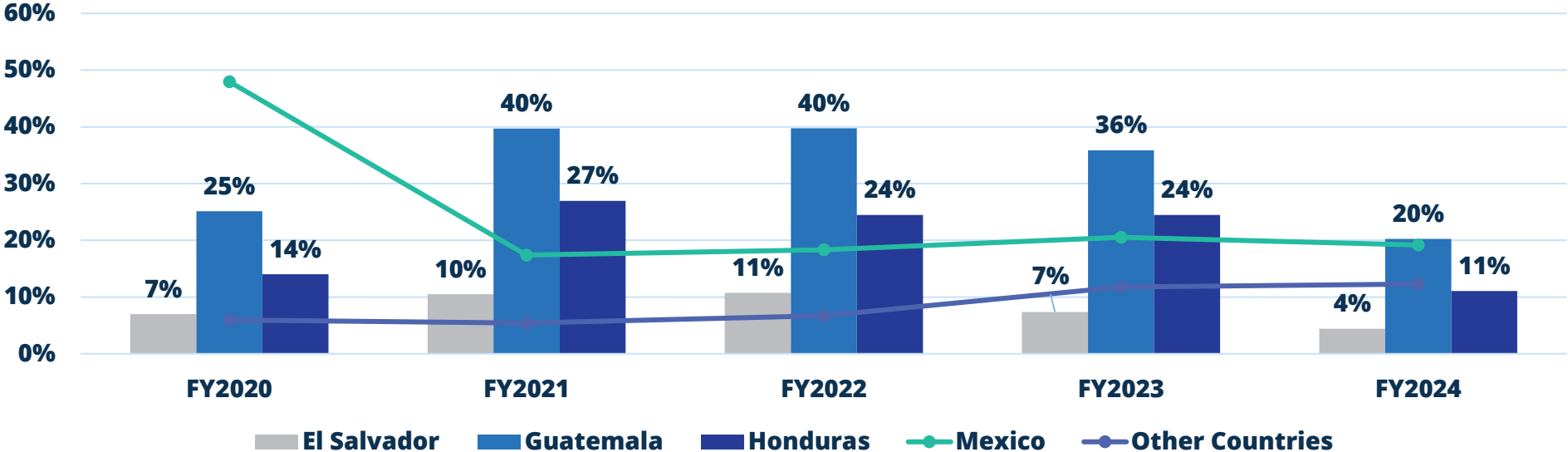
Source: USDOS, Report of the Visa Office 2012 Statistical Tables

Composition of migration—

- The composition of migration has also changed.
- Demographically people on the move are half adults, and half families and unaccompanied children: 5% of all migrants entering the US in 2022 are unaccompanied minors;
- For the Northern Triangle that composition is more distributed
- More kids are leaving every year (15% of all Guatemalan migrants) than the annual increment of matriculation in high school in Central America: Guatemala's matriculation is declining since 2018
- This inflow to the United States is composed of migrants from Mexico, Central America—with significant increases from Nicaragua—and Ecuador as well as refugees from Venezuela, Cuba and Haiti.

Child Migration...

Unaccompanied Minors

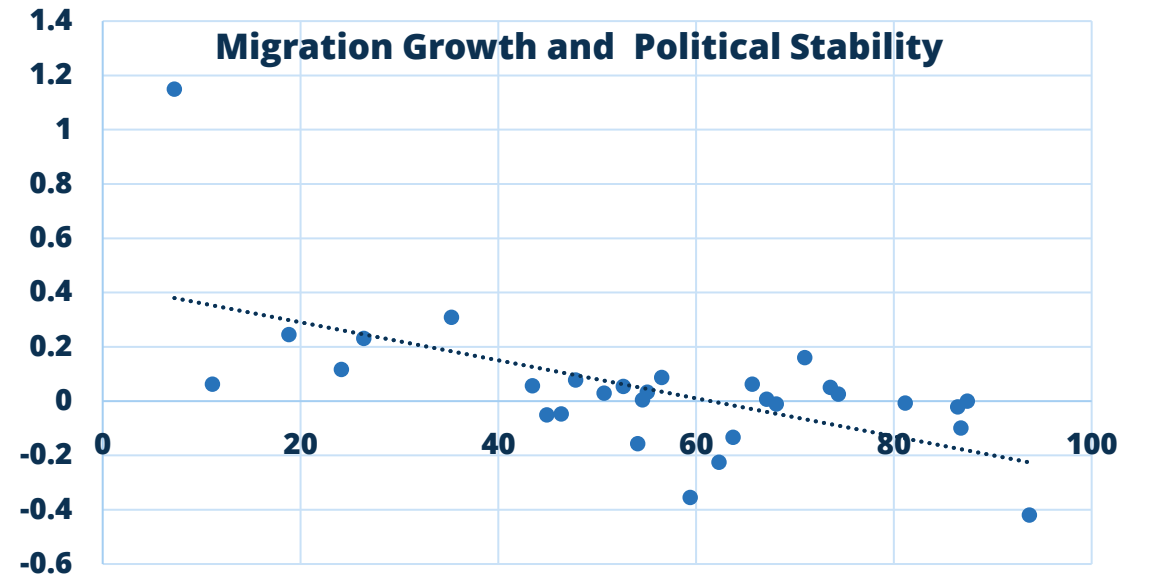
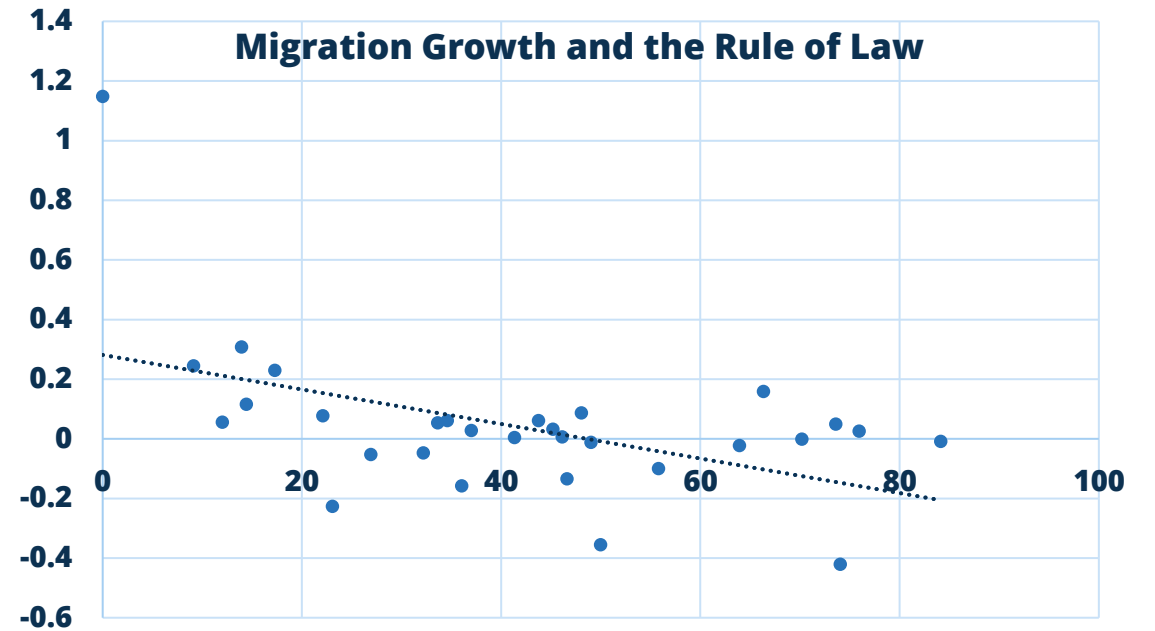


The nature of migration—

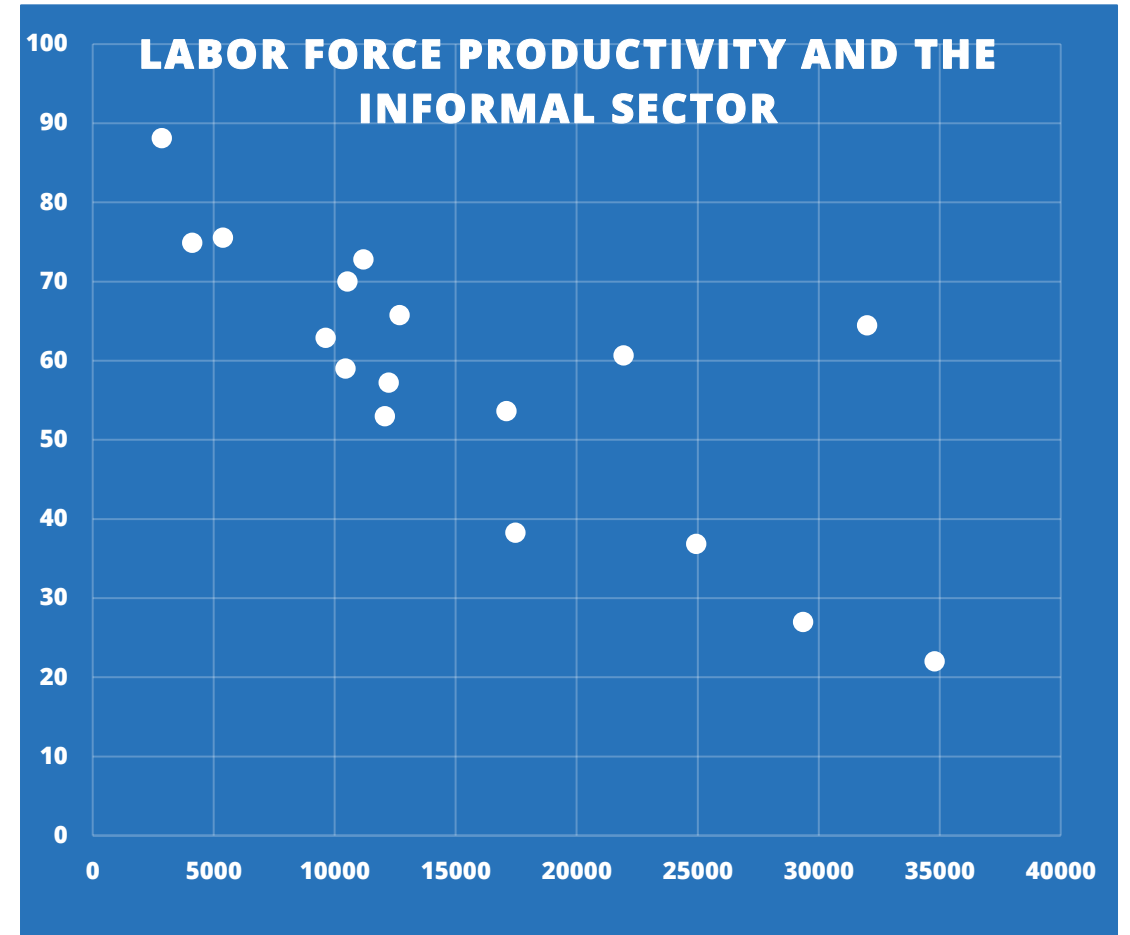
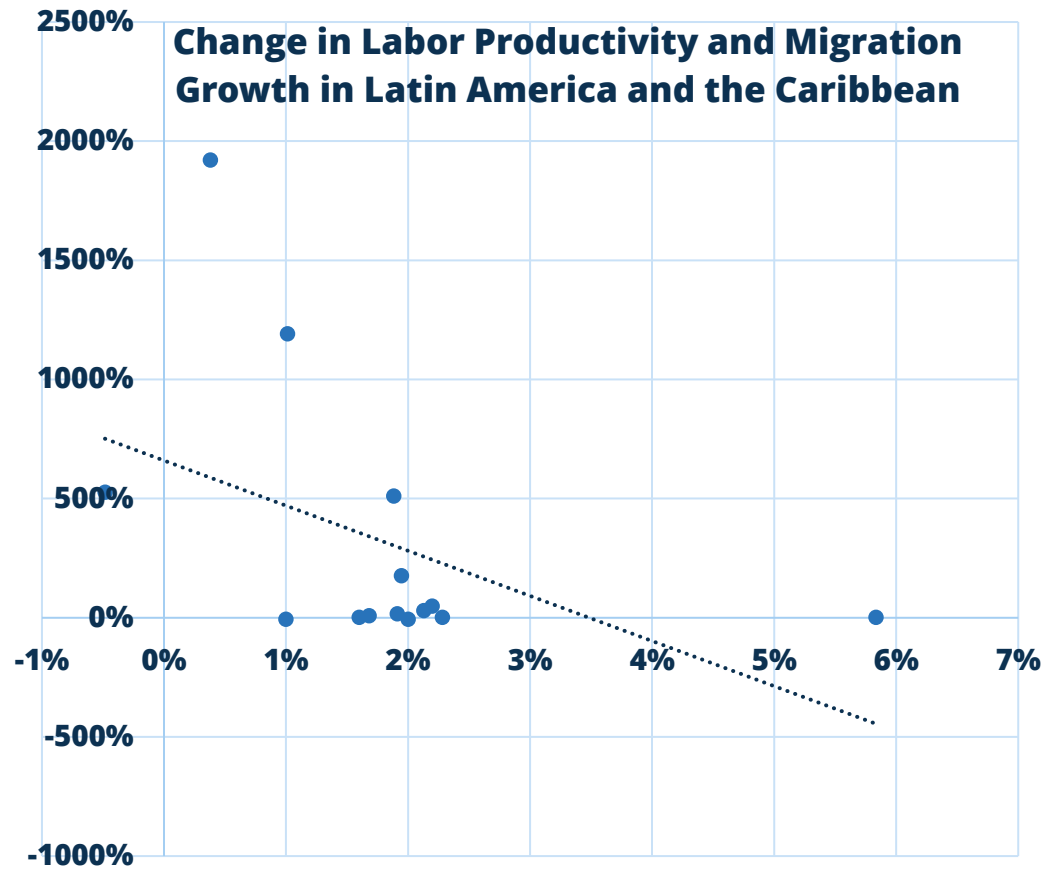
The factors or determinants explaining current migration are more complex and include political crises, economic insecurity, violence, weak social protection systems, COVID-19 contagion, low vaccination rates, and natural disasters.

Economic	Social and Aspirational	Transnational	Political	Environmental
<ul style="list-style-type: none">• Unemployment• Informal economy• Low income (<\$400)	<ul style="list-style-type: none">• Pessimist outlook of the present and future;• Victimization	<ul style="list-style-type: none">• Relatives abroad;• Receiving remittances;• Market access knowledge	<ul style="list-style-type: none">• Mistrust of political system;• Concentration of power;• Intimidation and political threats	<ul style="list-style-type: none">• Earthquakes;• Hurricanes;• Droughts;• Floods• Pandemics;

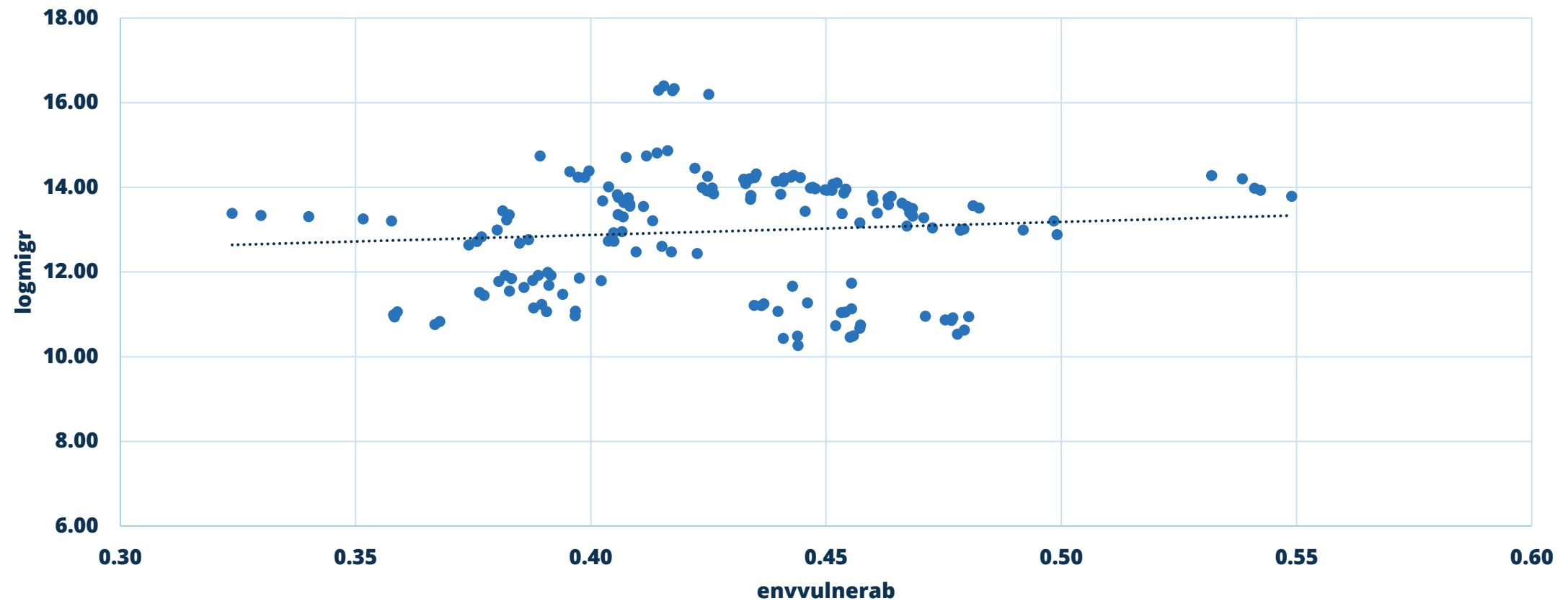
Political stability correlates negatively to migration



Migration, informality, and labor productivity



Migration and Env. Vulnerability in Latin America and the Caribbean, 2000 – 2020: not a correlation but...



Climate change and migration in Central America (2000-2021)

- The regularized effect of natural disasters creates displacement or gradual wearing out of resources over time.
- In turn some relationship between migration and climate change exist
- Statistically, there is no relationship because these events do not always have immediate effects ,with some exceptions as a massive event like Hurricane Eta.
- However, is important to consider diaspora engagement on issues related to conservation and climate adaptation among Caribbean countries and some from Central America.

Type of Disaster	El Salvador	Guatemala	Honduras	Nicaragua	Four Countries
Flood	8	18	9	13	48
Tropical Cyclone	7	4	5	8	24
Epidemic	6	3	6	3	18
Drought	4	4	5	3	16
Earthquake	5	5	2	2	14
Tech. Disaster	2	8			10
Severe Local storm	2	2	1	4	9
Volcano	2	6			8
Landslide	1	4		1	6
Other		2	1	1	4
Cold Wave		3			3
Wildfire			2	1	3
Mudslide		1		1	2
Extreme temperature		1			1
Fire			1		1
Mudslide		1			1
Storm Surge	1				1
Tornadoes				1	1
Wave			1		1
Total	38	62	33	38	171

Outmigration at municipal level from the three countries as share of migrants from the dry corridor.

- Over time the shifts have been small and uneven (compare Guatemala and Honduras).
- The most affected area by the dry corridor in Honduras is the Western part of the country, where 20% of Hondurans live (some of the poorest areas) there is also a significant increase in outmigration and proportional to its population—unlike other areas.
- Bear in mind that the geographic origin of migration is not related to population distribution but to more economic factors (marginal declines in income in large cities, transnational ties, insecurity in high crime areas).

Dry Corridor	El Salvador	Guatemala	Honduras
2012	100%	72%	44%
2015	100%	70%	48%
2018	99%	67%	46%
2020	100%	68%	47%
Pop.2018 Dry C	100%	60%	54%

NW Dry corridor	Honduras
2012	12%
2015	11%
2018	19%
2020	18%
Pop.	20%

Central America exemplifies the complexity and differences in migration

- Guatemala and Honduras exhibit a mix of issues, from economic and aspirational issues to political and impacts of natural disasters
- Nicaragua instead shows economic and aspirational issues both tied to political conditions with an intention directly connected to dictatorship
- El Salvador migration, also like Nicaragua, but the concern on Bukele's concentration of power
- In turn, migration continues, in some cases increases like in Nicaragua

Total Migration	2018	2019	2020	2021	2022
El Salvador	53,406	85,419	16,262	64,106	65,295
Guatemala	150,938	205,349	32,631	152,738	112,765
Honduras	109,383	211,589	28,337	173,095	136,202
Nicaragua	4,161	11,034	2,265	92,300	184,775
Four Countries	317,888	513,391	79,495	482,239	499,037

The Intention to migrate 2020: Triggers and statistical determinants

Reasons given to explain reasons to migrate...	Guatemala	Honduras
Aspirational Improvements		
Because my family or friends recommended it	6.00%	6.5%
To be with family	4.80%	2.2%
To study/so that my kids can study in another country	6.00%	6.3%
To better my life or the lives of my children / family	14.70%	9.8%
To send money to my family	13.80%	10.6%
Economic Difficulties		
Because my income is very low	12.30%	9.0%
Cost of living is too high – I can't live here	5.80%	6.3%
Because there are no jobs here	9.40%	6.9%
There is hardly any yield from harvest	4.50%	3.8%
Because we lost our land	3.20%	4.2%
Natural Disaster/Crisis		
Because of the situation caused by Covid-19	3.60%	8.0%
Because of the damage caused by Hurricane Eta		5.1%
Victimization & Politics		
Because there is so much violence here	5.00%	7.7%
I / my family was threatened through extortion	0.30%	4.6%
Because of the political situation	4.80%	8.9%

The intention to migrate changes to largely economic issues, and increases when an individual:

- *Is not receiving remittances*
- *Lost work due to the pandemic*
- *Is receiving less remittances in 2020 than in 2019*
- *Home was damaged by hurricane ETA*
- *Is unemployed*
- *Works in the informal economy*
- *Is male (for Guatemalans only)*

The intention to migrate from Nicaragua (2022)

Four broad factors explain a strong intention to migrate:

- first, perceiving that economic conditions will be worse and the country is going in the wrong direction;
- second, belief that Ortega will have more support, that elections were illegitimate, and one can't trust people after the elections.
- Third, having a household income below \$500.
- Other factors include being under 35 and living in Managua.

	Exp(B)	Stat. sign.
País va en camino equivocado	1.874	***
Después de las elecciones no nada confía en conversar con amigos	1.78	***
Edad (entre más joven, mayor la intención)	0.978	***
La situación económica de su familia en el 2022 será peor	1.668	***
Managua	1.524	***
Muy en desacuerdo que Ortega tendrá más apoyo después de Enero	1.437	***
Ingreso del hogar es menor de 20,000 Cordobas	1.405	***
Menores de 35 años	1.585	***

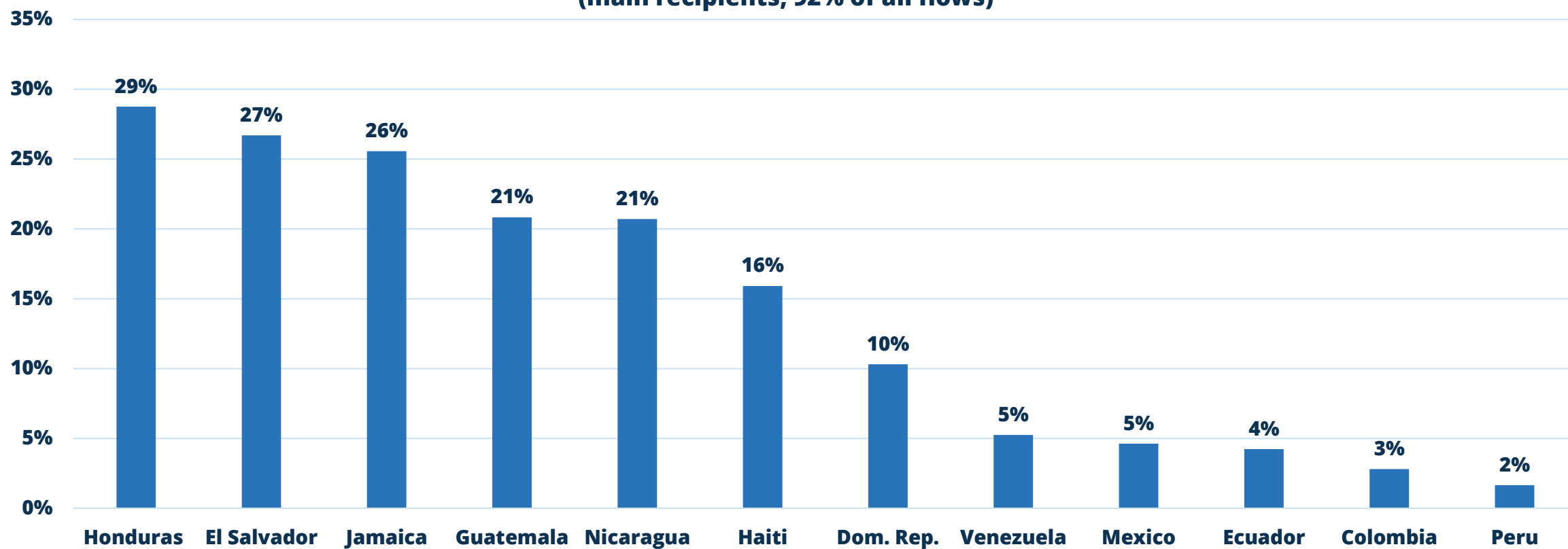
- Intention to migrate from El Salvador (34%):
Socioeconomic and Political Perspectives on Intent to Migrate, Marginal Effects

Characteristic	Model 1
Positive Country/Presidency Outlook	-0.033*
Have Sibling Abroad	0.028*
Receive Remittances	0.081*
Own Land	-0.214*
Have Savings	0.122*
Negative Economic Outlook	0.126*
Negative Hope for Personal Future	0.132*
Concentration of Power	0.001*
Age (younger)	-0.003*
Mobile Bank Account Ownership	-0.226*
Monthly Income btw \$400 and \$600	0.127*
Crime Victimization	0.153*
Informality	0.037*

*p < .05, all other coefficients p > .05; Notes: Positive Country/Presidency Outlook is combination of P20 & P18; Informality is vendedores y duenos de empresas con ingresos mensuales debajo de \$300 resto formal. Obs = 488; Pseudo Adjusted r2 = 0.2867

The economic impact of these flows are now 5% of Latin America and the Caribbean's national income translated into an estimated payment network of 45 million p2p transactions a month

**Share Remittances to GDP in 2022
(main recipients, 92% of all flows)**



Migration, Remittances, and Environmental Vulnerability



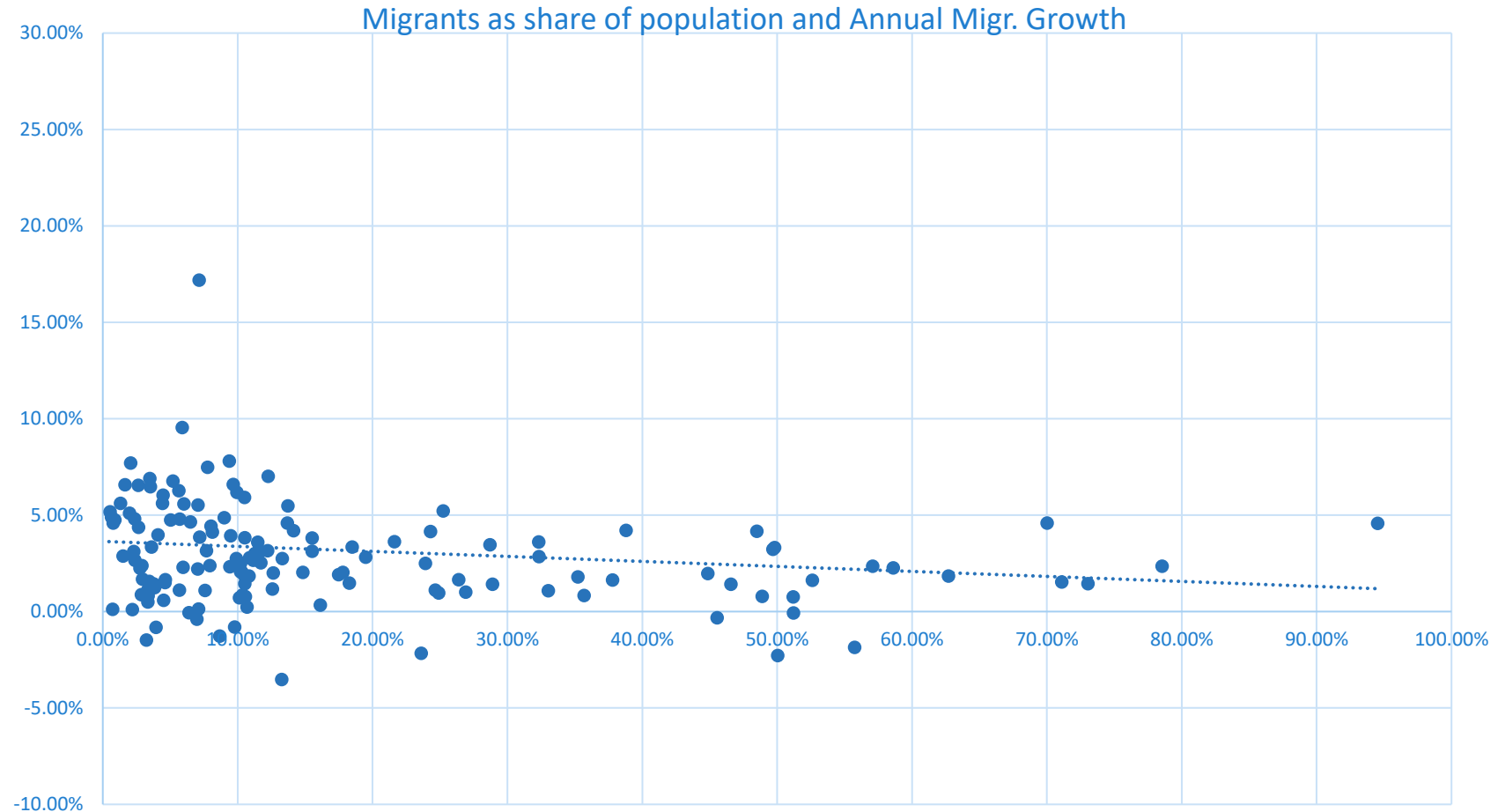
Remittance
Transfer Five
Year Annual
Growth and
Migrants as
share of
Population

Country Name	Growth 2001-2005	2005-2010	2010-2015	2015-2022	Migr./Pop.
Argentina	18%	8%	-5%	7%	2%
Belize	9%	12%	-7%	8%	19%
Bolivia	20%	23%	11%	3%	8%
Brazil	14%	2%	-2%	6%	1%
Colombia	10%	4%	11%	11%	5%
Costa Rica	16%	5%	3%	2%	3%
Cuba	3%	2%	5%	-1%	14%
Dominican Republic	7%	7%	11%	10%	13%
Ecuador	12%	1%	8%	10%	8%
El Salvador	9%	3%	9%	9%	24%
Guatemala	37%	7%	12%	16%	13%
Guyana	55%	13%	0%	6%	61%
Haiti	10%	8%	13%	6%	13%
Honduras	24%	8%	11%	13%	13%
Jamaica	11%	3%	1%	6%	37%
Mexico	18%	-1%	11%	13%	11%
Nicaragua	13%	6%	9%	14%	17%
Panama	12%	26%	6%	0%	4%
Paraguay	3%	21%	7%	1%	12%
Peru	14%	12%	5%	5%	5%
Suriname	81%	2%	-127%	-29%	63%
Trinidad and Tobago	18%	0%	-7%	5%	25%
Uruguay	562%	10%	14%	7%	14%
Venezuela				5%	25%
LAC (24 countries)	15%	3%	12%	11%	

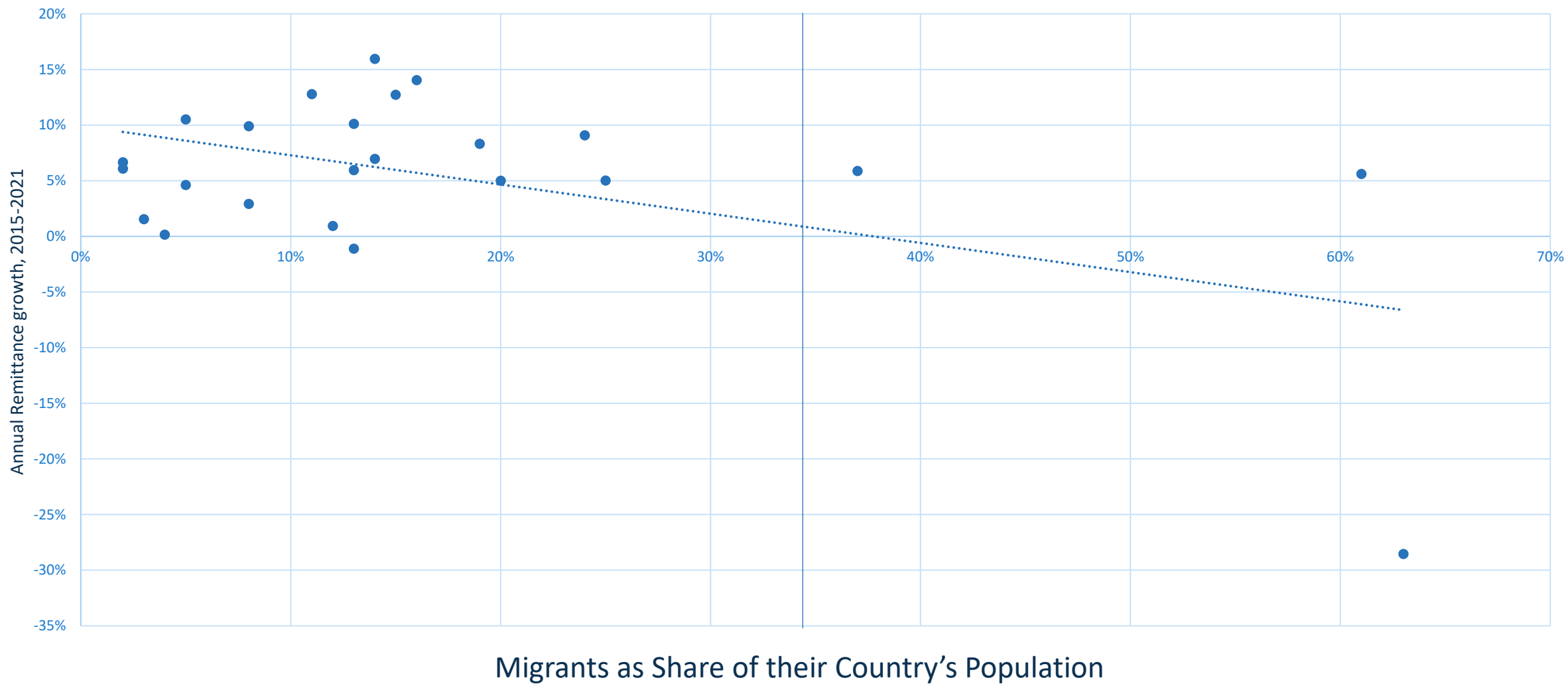
Solutions at hand? Is migration to continue?

- Migration is likely to continue but not above 7% annual growth as in the past four years;
- The continuity of human mobility is tied to state fragility in various manners but calls attention to a foreign policy approach accompanied to a sound development strategy
- Regardless of cause, labor mobility is integrating Latin America and the Caribbean to the global economy
- Successfully addressing solutions to the increasing numbers of migrants into the United States and other countries within the LAC region will require interventions that can have a regional as well as a country-by-country approach. The challenge is that the region is leading with non-cooperative partners and players.
 - These solutions include:
 - i. Humanitarian assistance
 - ii. A development and democratization strategy
 - iii. Regularization and migrant inclusion efforts
 - iv. Transnational city strategies

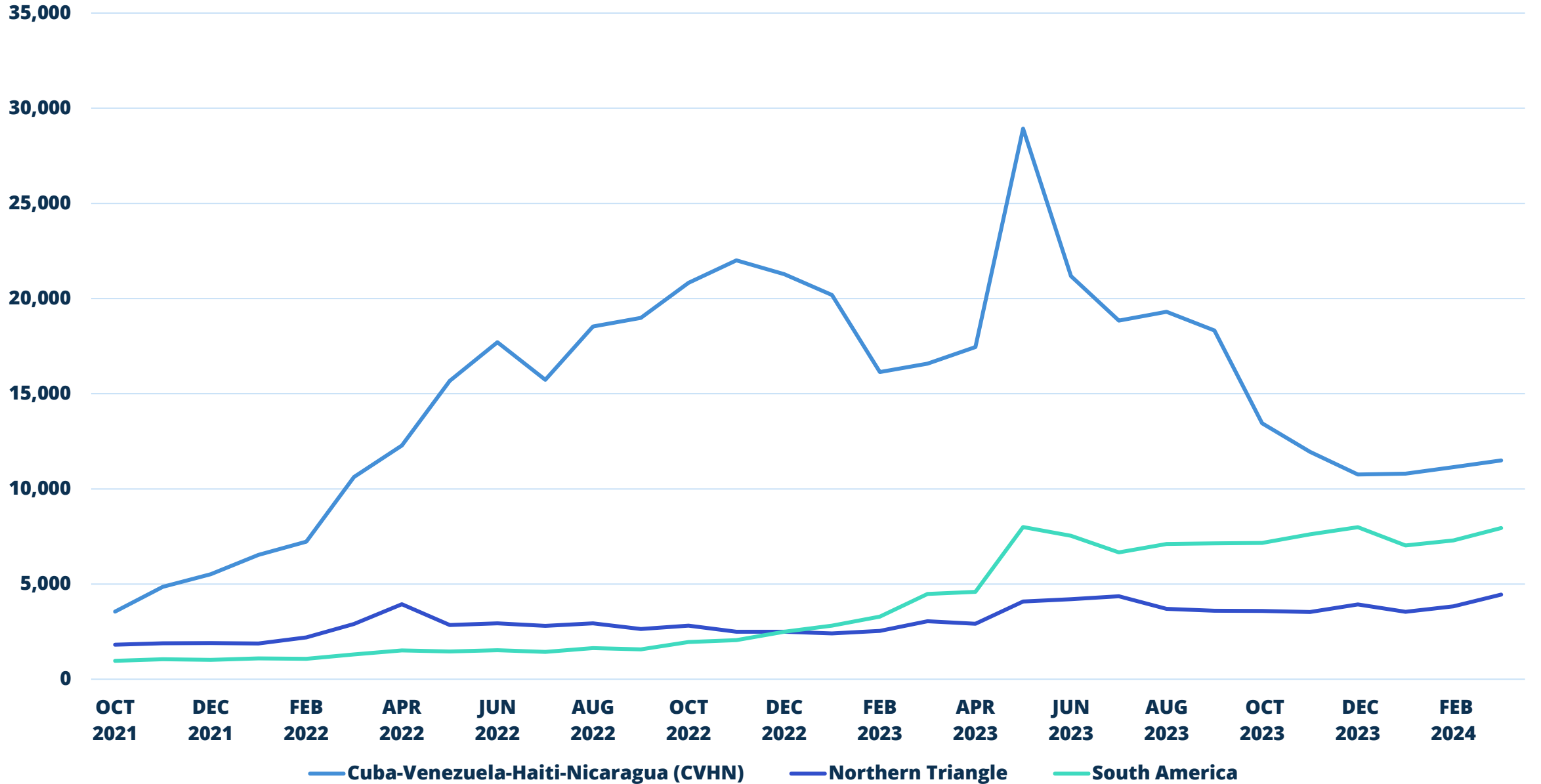
Over time, migration growth slows down when the diaspora is over 20% of its population: 1% increase of migrants relative to their homeland population, decreases growth by 2.7%.



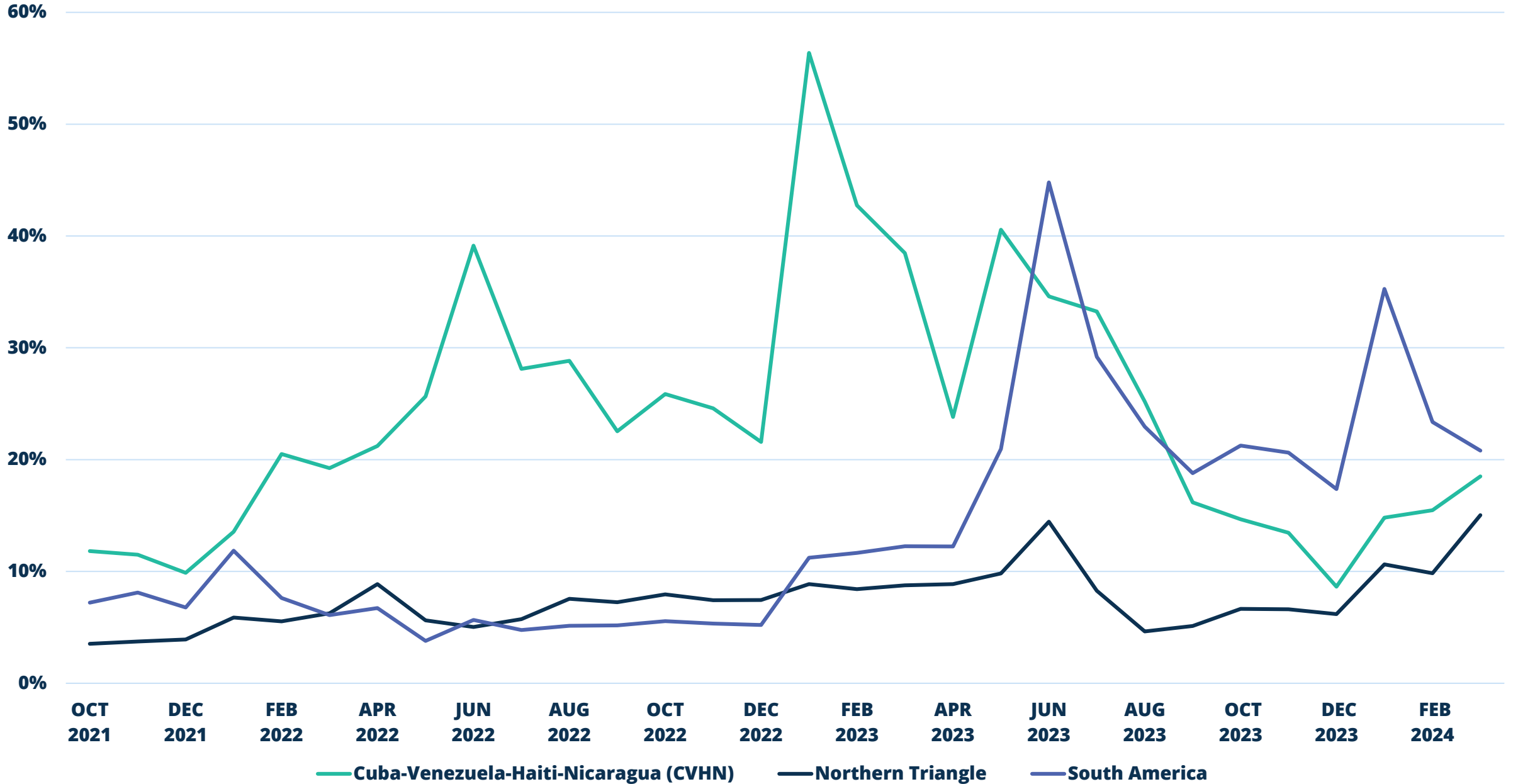
Growth of Remittances, 2015-2021 and Share of Migrants relative to Population (2021): Remittance flows slow down during normal times across countries with large diasporas and decades long migration



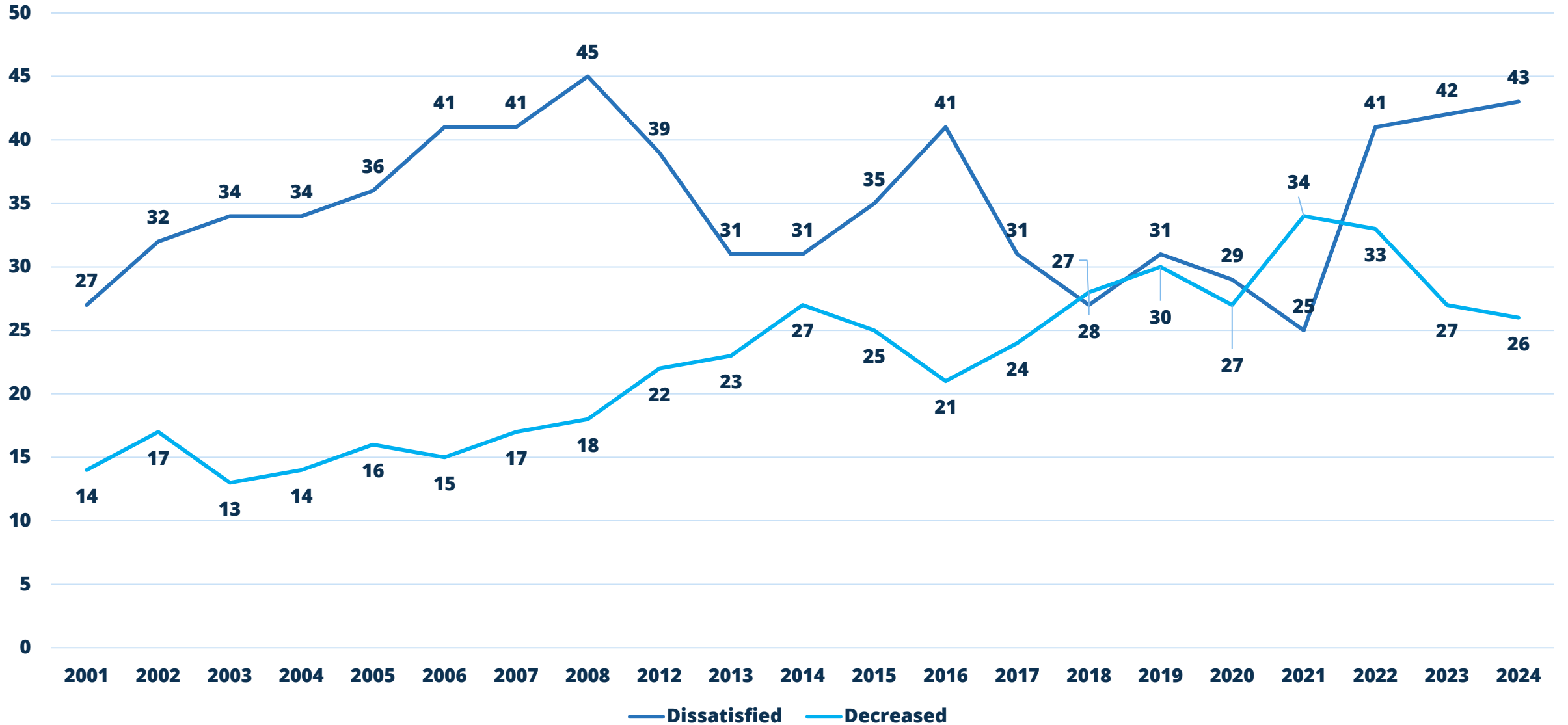
Asylum Applications



Asylum Applications (as a % of Encounters)



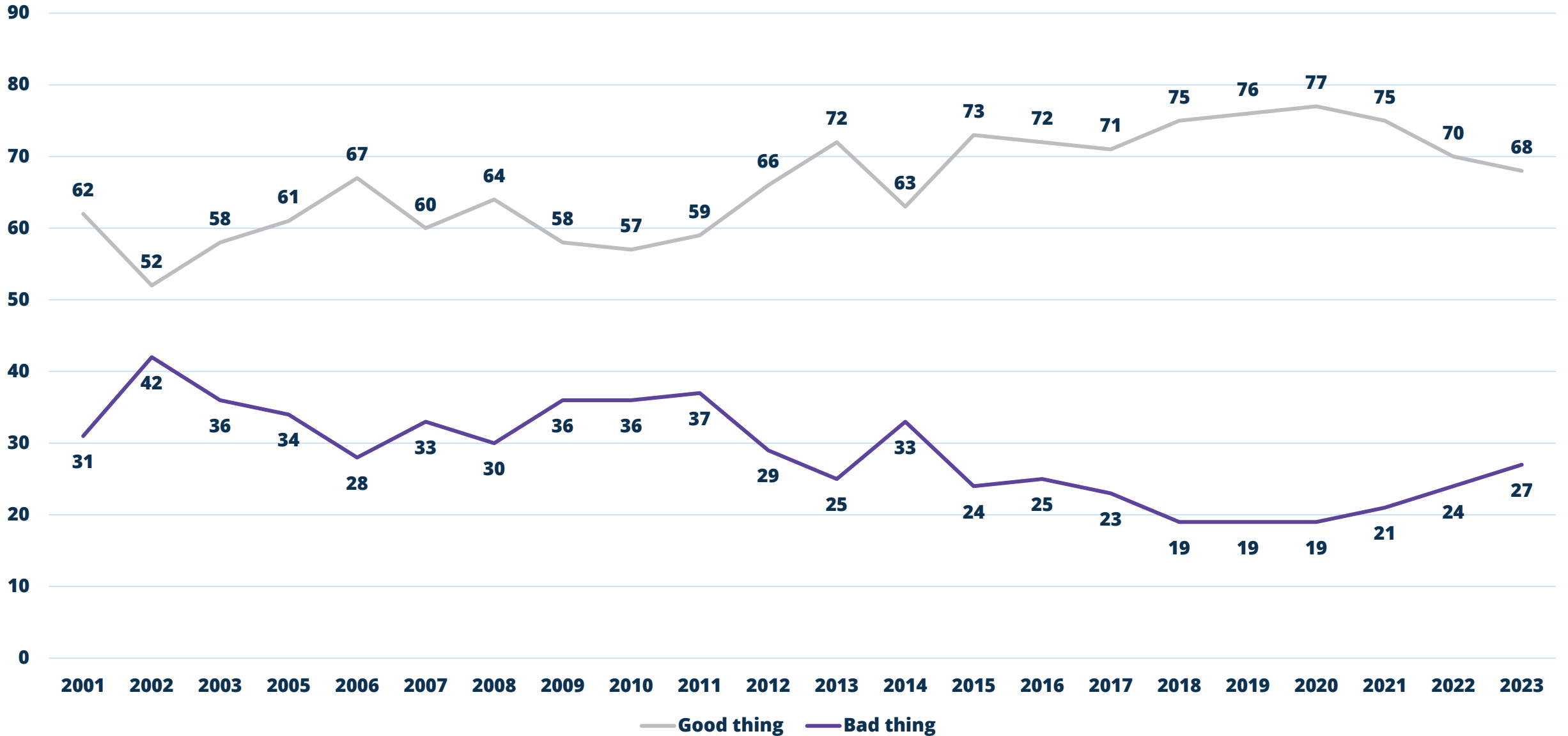
People who think immigration should be decreased & People who are dissatisfied with current migration levels (%)



Source: Gallup polls on "Immigration"

<https://news.gallup.com/poll/1660/immigration.aspx#:~:text=Americans'%20views%20on%20the%20level,and%2026%25%20want%20it%20increased.>

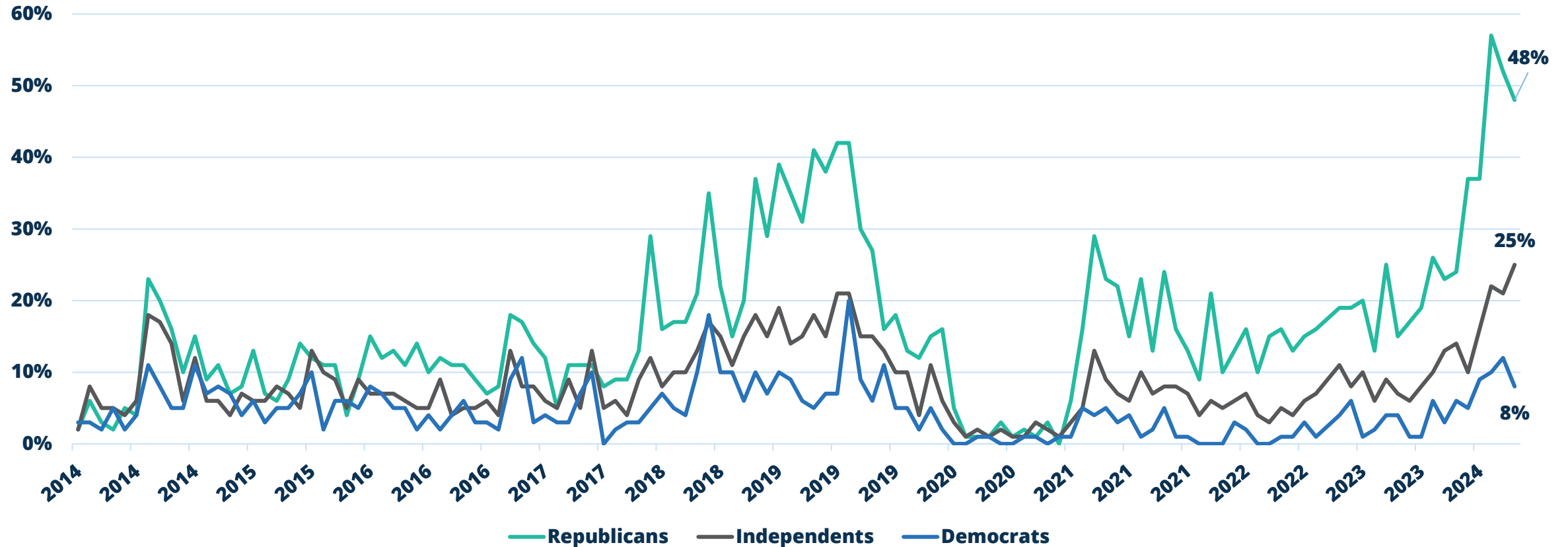
On the whole, do you think immigration is a good thing or a bad thing for this country today? (%)



Source: Gallup polls on "Immigration"

<https://news.gallup.com/poll/1660/immigration.aspx#:~:text=Americans'%20views%20on%20the%20level,and%2026%25%20want%20it%20increased.>

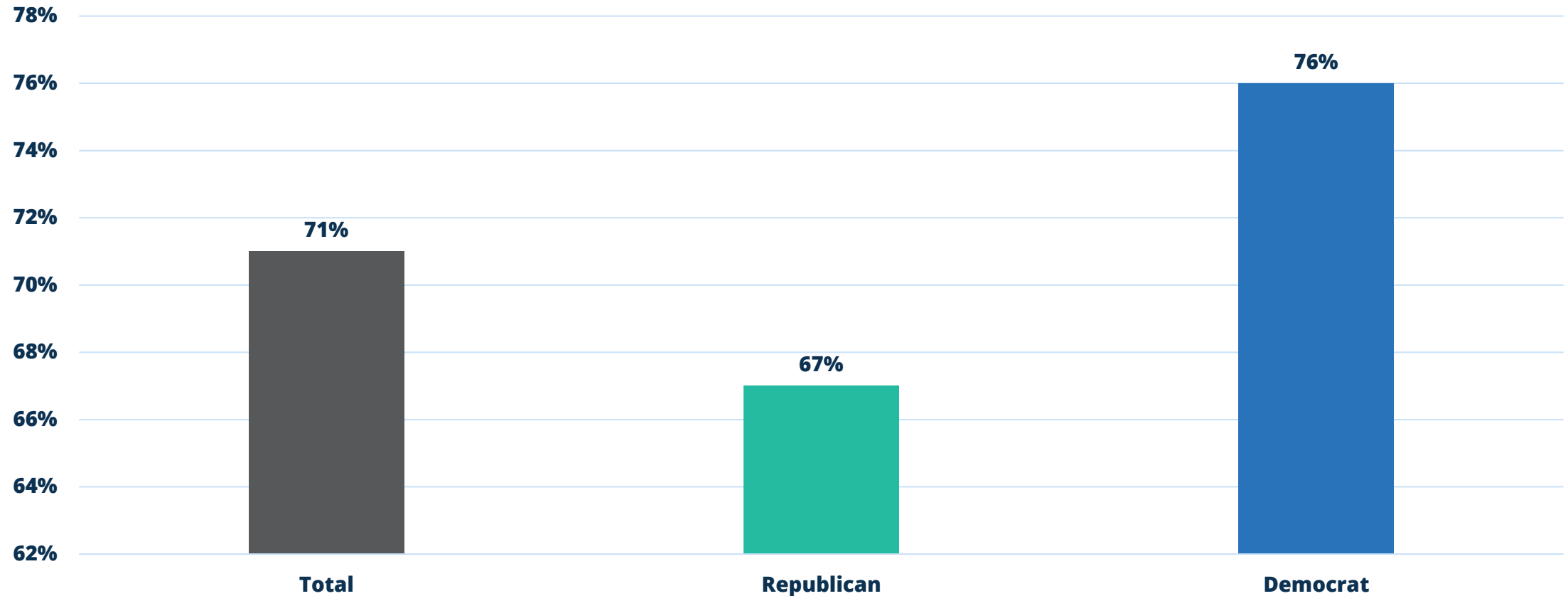
Post-pandemic US citizens are increasingly mentioning immigration as the key issue facing the country



Source: "Immigration Named Top U.S. Problem for Third Straight Month," *Gallup*, April 2024
<https://news.gallup.com/poll/644570/immigration-named-top-problem-third-straight-month.aspx>

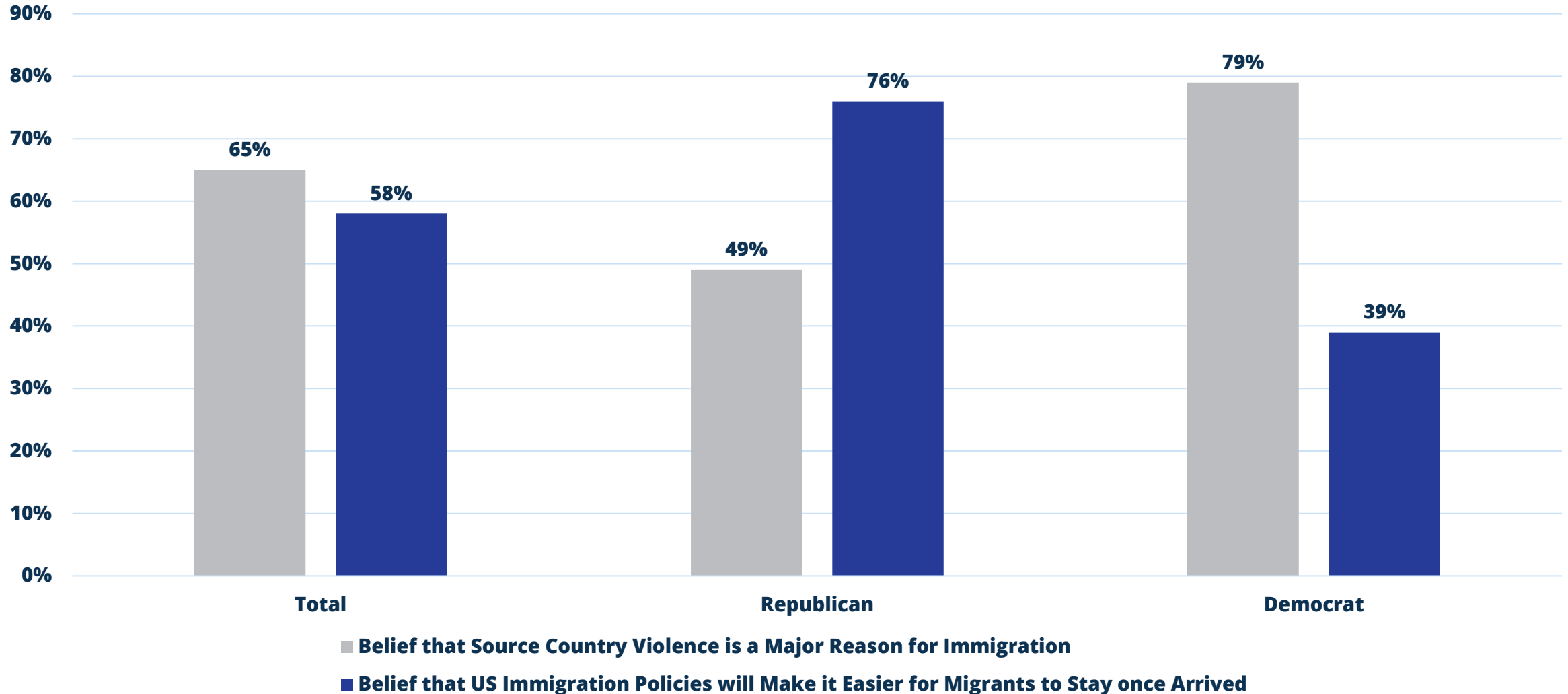
US citizens agree that economic opportunities are a pull factor for immigration

Belief that Economic Opportunity is a Major Reason for Immigration



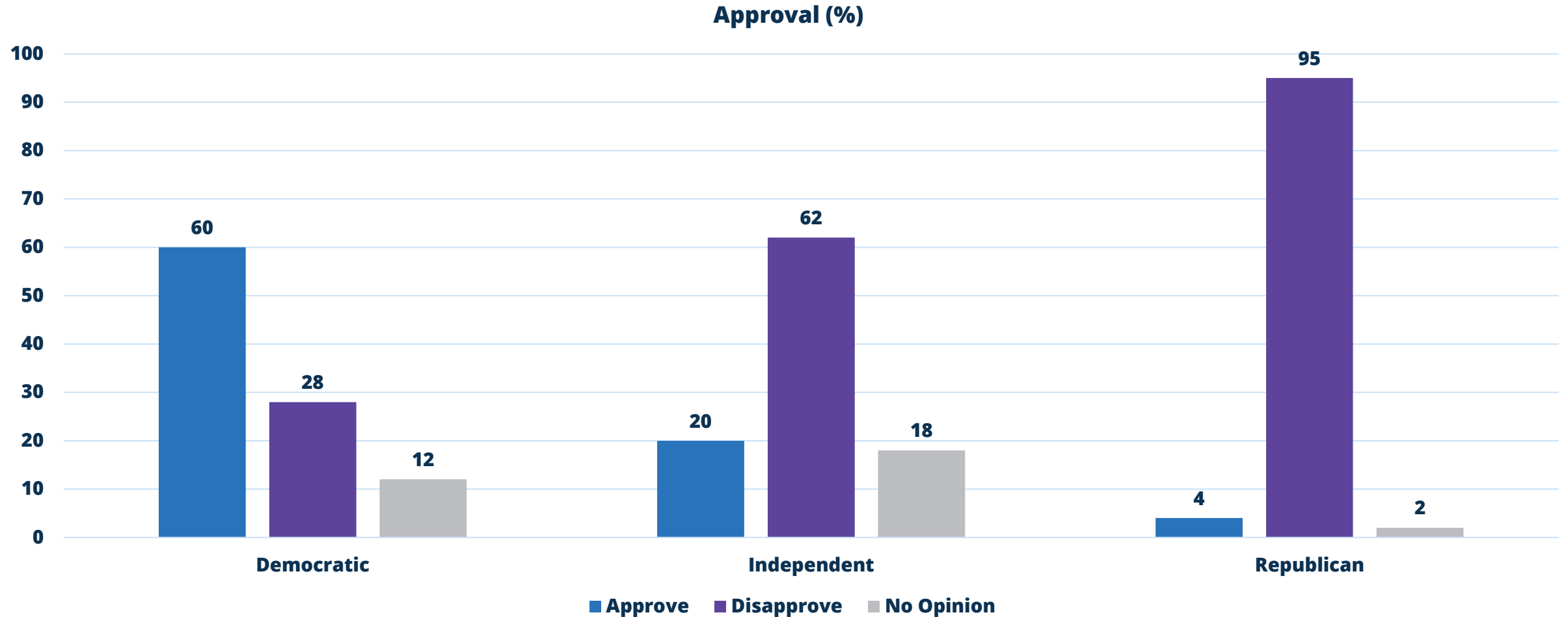
Source: Pew Research Center – Survey of US adults conducted January 16-21, 2024

US citizens were split on whether source country violence and/or border policies are reasons for migration



Source: Pew Research Center – Survey of US adults conducted January 16-21, 2024

In an election year, 60% of voters disapproved of the Biden Administration's handling of immigration



Source: The Economist/YouGov Poll, May 19-21, 2024. 1,784 respondents.
https://d3nkl3psvxxpe9.cloudfront.net/documents/econTabReport_9aJ08lk.pdf

